

Welcome to  
Lincolnshire  
[www.discoverlincs.co.uk](http://www.discoverlincs.co.uk)

# Discover LINCOLNSHIRE

A top destination to visit in 2020

Explore Pilgrim Roots

# MAYFLOWER 400

# TOUR BANKS CHURCHES

# Lincoln CURIOSITIES

# COMPETITION WIN A MIDWEEK SHORT BREAK

LINCOLNSHIRE'S MOST COMPREHENSIVE **VISITOR GUIDE**



## A RICH HISTORY

Gardens and grand houses



## EXHILARATING CONTRASTS

Coasts for all seasons



## GET EXPLORING

Bikes, boots and boats

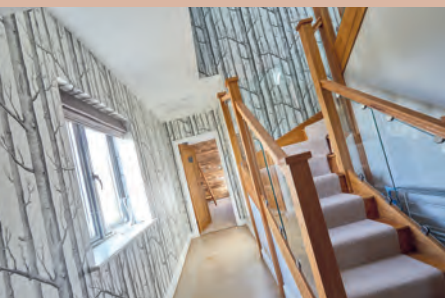




## AWARD WINNING SELF CATERING VENUE OF THE YEAR 2019



5 luxurious and spacious holiday barns, each comfortably accommodating 10 people in 5 en-suite bedrooms. Each barn features a log burning stove, barbecue and huge hot tub in private gardens overlooking Lincolnshire countryside, just 5 miles from the bustling Cathedral city of Lincoln.



Ashlin Farm Barns  
Ashing Lane, Dunholme  
Lincoln LN2 3BY

Contact Natalie on 01673 863392  
[www.ashlinfarmbarns.co.uk](http://www.ashlinfarmbarns.co.uk)  
[info@ashlinfarmbarns.co.uk](mailto:info@ashlinfarmbarns.co.uk)



# Discover LINCOLNSHIRE

## Welcome to LINCOLNSHIRE IN 2020

*Come and join us for a landmark  
year in our beautiful county.*

From our cosmopolitan county capital and the awe-inspiring magnificence of Lincoln Cathedral, follow pathways and routes to find space to catch your breath, relax and explore; wide and wonderful beaches, internationally renowned nature reserves and world class history and heritage.

Lincoln Cathedral Connected, the £12.4m project to improve the Cathedral's setting and the visitor experience, will be completed this year. The work has seen the restoration and renovation of the building with new facilities including a visitor centre, a larger shop and café and an interpretation centre showcasing some of the Cathedral's treasures and hidden history.

Hidden behind the walls of Lincoln Castle, visitors will discover the fascinating story of the Norman castle's history; as a stronghold; as a hub of trade; and as a centre for justice and imprisonment. A specially created vault is the new home of Lincoln Cathedral's Magna Carta, displayed beside The Charter of the Forest.

Dedicated cycle routes, waterways, trails and walks help you explore aviation history, admire the magnificent coastline, wander through tranquil gardens, connect with nature and experience the county's excellent produce in hotels, pubs, restaurants, coffee and tea shops.

This year also marks the 400th anniversary of the Pilgrim

Fathers sailing to the New World to find religious freedom. The national and international celebration, Mayflower 400, includes a programme of events in Nottinghamshire and Lincolnshire from where the roots of the Separatists can be traced. Our 8-page supplement gives you routes and the background story to follow in their footsteps in our county.

Read on to discover why Lincoln and Lincolnshire is a 'must see' destination for 2020 or visit [www.discoverlincolnshire.com](http://www.discoverlincolnshire.com)

*Caroline*

Caroline Bingham  
Chief Executive

### FRONT COVER

Southrey Church

### PUBLISHED BY

County Life Limited, County House, 9 Checkpoint Court, Sadler Road, Lincoln LN6 3PW

Tel: 01522 692542

Email: [info@km-media.co.uk](mailto:info@km-media.co.uk)

Web: [www.discoverlincs.co.uk](http://www.discoverlincs.co.uk)

### GET IN TOUCH

*Editorial:* Caroline Bingham and Katrina Burrill

*Advertising:* Fiona Thomas and Isabel Dewey

*Graphic Design and Production:* Darren Summers, Max Márquez and Janet McDermott-Brown

*Administration:* Yusef Sayed and Kellie Jackson

*Accounts:* Sue Sagliocca

Further copies of the guide can be purchased by visiting [www.discoverlincs.co.uk](http://www.discoverlincs.co.uk) or by calling our offices on 01522 692542.

This publication and its contents shall not be lent, re-sold or otherwise circulated without the publisher's prior consent.  
© County Life Ltd

Inclusion in this brochure does not imply recommendation by County Life Ltd. Although great effort has been made to ensure the accuracy of this publication at the time of going to print, changes can occur so it is advisable to confirm the information provided.



**Discover Lincolnshire**



6



10



# Contents

## 6 LINCOLN

*A city of hidden gems*

## 10 AVIATION

*Heritage in the skies*

## 12 OUTDOORS

*Explore the countryside*

## 14 GRAND HOUSES

*Stately homes and magnificent gardens*

## 16 JOSEPH BANKS

*Naturalist and botanist*

## 20 THE COAST

*Fun for all the family*

## 24 MAYFLOWER 400

*Pilgrim Roots*

## 30 DELICACIES

*A flavourful county*

## 34 ATTRACTIONS

*Top days out for 2020*

## 46 FESTIVALS

*To suit all tastes*

## 50 ACCOMMODATION LISTINGS

*Where to stay*

12



14



20



16



24



30



34





# lincoln drill hall

your arts centre



[www.lincolndrillhall.com](http://www.lincolndrillhall.com)

Tel: 01522 873894



LincolnDrillHall



lincdrillhall

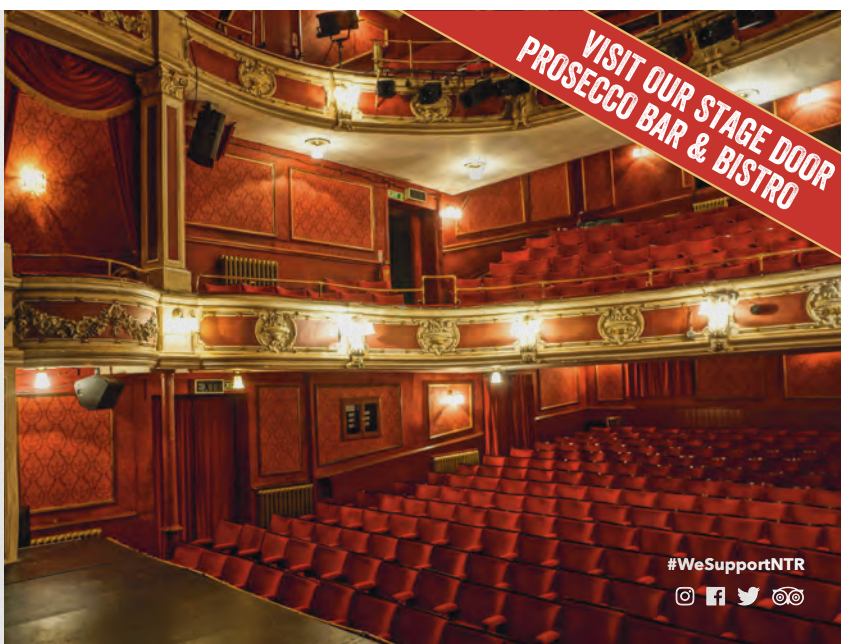
## NEW THEATRE ROYAL LINCOLN

### PROVIDING LINCOLN WITH THE VERY BEST OF LIVE ENTERTAINMENT

EXPERIENCE PLAYS, COMEDY, LIVE  
MUSIC, DANCE, PANTOMIMES,  
AND MORE IN OUR BEAUTIFUL  
125 YEAR-OLD  
VICTORIAN THEATRE.

(01522) 519999 | [www.ntrlincoln.co.uk](http://www.ntrlincoln.co.uk)

New Theatre Royal Lincoln, Clasketgate, Lincoln LN2 1JJ



VISIT OUR STAGE DOOR  
PROSECCO BAR & BISTRO

#WeSupportNTR



## GREAT THEATRE AT THE HEART OF THE CITY



## Lincoln Performing Arts Centre

BOX OFFICE:

01522 837600 //  
[WWW.LPAC.CO.UK](http://WWW.LPAC.CO.UK)





Discover LINCOLN

A city of hidden gems

# Curious LINCOLN

*Behind the magnificent facades and features of the city's architecture and historic buildings there is a wealth of intriguing stories not apparent until you dig below the surface.*



Join us on a city tour where we reveal some of the lesser known history behind the landmarks. We begin our stroll at the Visitor Information Centre on Castle Hill

**THE WHITE HART HOTEL, BAILGATE**

On the first floor of the hotel is what is known as the Tank Room. Here in September 1915 engineer Sir William Tritton and Major W G Wilson conceived the design of the first military tank. An early example is on display at the Museum of Lincolnshire Life and a memorial on the Tritton Road roundabout is close to what was the site of the William Foster & Co factory where the first 200 rolled off the production line.

**LINCOLN CATHEDRAL, MINSTER YARD**

Cathedral guides will take the chance to point out some of the extraordinary images and graffiti which successive generations of visitors and workmen have etched into the fabric of the building. The sharp-eyed amongst you will find examples ranging from medieval symbols to Victorian tourist's etchings. Specific Graffiti Tours are sometimes available but places are limited and must be booked in advance.



**TENNYSON STATUE, MINSTER GREEN**  
The Victorian Poet Laureate was born in Somersby, Lincolnshire in 1809. His memorial statue by George Frederick Watts depicts Tennyson with his Russian hound, Karenina, gazing up at him. The poet holds a flower in his hand and the informality of the statue shows a humanity and grace which affects many when they view it for the first time.



**ROMAN WALL, WESTGATE**  
View parts of the boundary of the Roman city of Lindum Colonia with part of the excavated wall remains to the left of the frontage of the Lincoln Hotel.

**PRIORY GATE AND POTTERGATE ARCH POTTERGATE**  
Priory Gate, closer to the Cathedral is one of the medieval gates which gave access to the cathedral close while Pottergate Arch on Lindum Hill was the south-east, main gateway into the grounds.

**THE CHANCERY, POTTERGATE**  
As you walk down Minster Yard towards Pottergate on the left is The Chancery also known as the Deanery, former home (1391-1392) of Katherine Swynford, Duchess of Lancaster and third wife of John of Gaunt. Stroll down Greetstone Stairs, reputed to be amongst the city's most haunted sites and walk down to Lindum Hill, the Usher Gallery and The Collection. Continue down Flaxengate onto Clasketgate where the New Theatre Royal has a double claim to fame. Its backstage door was once the entrance and it was here that Geoffrey Archer, the disgraced former MP and author worked as part of his day release from serving his prison sentence at North Sea Camp on the Lincolnshire coast. Walk down the High Street, under the Stonebow, until you reach St Mary's Church just before the railway crossing.

**ST MARY'S CONDUIT, ST MARY STREET**  
This ornate structure, built in the 16th century, supplied drinking water to the city until 1906. It is made from stone and architectural fragments taken from the Whitefriars/Carmelite Friary which once stood to the west side of the High Street. Retrace your steps back up the High Street, following the ancient route of pilgrims heading towards the Cathedral. At the top of the High Street, bear right on The Strait.

**JEWS HOUSE, THE STRAIT**  
The 12th century building is thought to be one of only five surviving medieval Jewish



houses in England and evidence of the prominent Jewish community in the city in the 12th and 13th centuries.

**MAYOR'S CHAIR, STEEP HILL**  
If the incline of Steep Hill has taken your breath away momentarily, take time to sit down at Mayor's Chair or Char. The seats are a relatively recent bequest from a former Mayor but the name is believed to have derived from the Char, or back entrances to houses which once stood on this spot.

**NORMAN HOUSE, STEEP HILL**  
Once one of the oldest surviving domestic buildings from the 12th century, Norman House was built according to tradition for Jesus of York, a moneylender who is reputed to have advanced large sums to nobility including King Henry II.



**TE LAWRENCE PLAQUE ON BROWN'S PIE SHOP, STEEP HILL**  
On the wall outside this popular eatery is a plaque which recognises the occasions when Lawrence of Arabia lodged on the site on his visits to Lincoln when he was stationed at RAF Cranwell.

And as you walk the short distance back to the start of our tour, you are following in the centuries old footsteps of TE Lawrence and thousands of pilgrims, visitors and residents of Lincoln. You can discover more at: [www.visitlincoln.co.uk](http://www.visitlincoln.co.uk) or book a Green Badge Guide. Bookings for guided tours can be made through: [brian@lincolnguidedtours.co.uk](mailto:brian@lincolnguidedtours.co.uk), Tel: 07747018455 or uphill tours from the VIC, Castle Hill – every Saturday and Sunday, 11am during Bank Holidays and April, May, June, Sept and Oct but every day during July and August.





**DODDINGTON  
HALL &  
GARDENS**

—

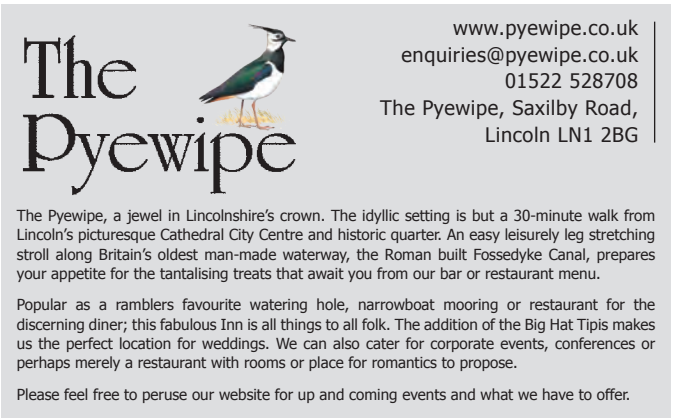
**ELIZABETHAN  
FAMILY HOME WITH  
STUNNING GARDENS**

FARM SHOP • CAFÉS • RESTAURANT  
HOME STORE • COUNTRY CLOTHING  
GIANT LINCOLN BIKE SHOP  
WEDDINGS • HOLIDAY COTTAGES

—

Shops & cafes open daily  
Please check website for Hall & Gardens  
opening arrangements & events

01522 694308 | Lincoln LN6 4RU  
DODDINGTONHALL.COM



**The  
Pyewipe**

www.pyewipe.co.uk  
enquiries@pyewipe.co.uk  
01522 528708  
The Pyewipe, Saxilby Road,  
Lincoln LN1 2BG

The Pyewipe, a jewel in Lincolnshire's crown. The idyllic setting is but a 30-minute walk from Lincoln's picturesque Cathedral City Centre and historic quarter. An easy leisurely leg stretching stroll along Britain's oldest man-made waterway, the Roman built Fossedyke Canal, prepares your appetite for the tantalising treats that await you from our bar or restaurant menu.

Popular as a ramblers favourite watering hole, narrowboat mooring or restaurant for the discerning diner; this fabulous Inn is all things to all folk. The addition of the Big Hat Tipis makes us the perfect location for weddings. We can also cater for corporate events, conferences or perhaps merely a restaurant with rooms or place for romantics to propose.

Please feel free to peruse our website for up and coming events and what we have to offer.




**DOUGHNOTTSOFFICIAL.COM**

**DOUGHNOTTS** **#DOUGHNOTTS**

HAND MADE DOUGHNUTS

EST. 2015

8 Cornhill, Lincoln LN5 7HE

Mixed, glazed & crafted by hand



# See what's waiting inside Hull's award-winning aquarium

Enjoy 12  
months **FREE**  
entry at no extra  
cost with the  
Day Plus  
Pass!\*

Buy your  
tickets online  
and save  
**10%**

See 5,000  
animals including  
sharks, rays,  
turtles, jellyfish  
and penguins!

Get hands-on  
at touchpool  
sessions and  
interactive  
stations!

Get up close  
to marine  
life in the  
10 metre deep  
underwater  
lift!

Watch regular  
feed presentations  
and the daily  
dive show!

Special events  
in school  
holidays!



thedeephull

## THE DEEP

For conservation, not profit.

[www.thedeep.co.uk](http://www.thedeep.co.uk)

\*Conditions and exclusions apply,  
see our website for details.



# Discover AVIATION

Heritage in the skies

# Wings OVER LINCOLNSHIRE

*Lincolnshire is synonymous with the Royal Air Force, for active aircraft protecting our skies today and the heritage of the 49 airfields located in the county at the height of World War II.*

Modern day RAF stations include Digby, Waddington and Cranwell in North Kesteven alone. RAF Scampton is the home of the RAF Aerobatic Team, The Red Arrows whose regular practice appearances in Lincolnshire skies delight locals and visitors alike, as does their annual programme of displays around the UK and abroad.

During 2020 there are more significant anniversaries relating to Lincolnshire's aviation heritage which will be marked with exhibitions, services, flypasts and talks. We have highlighted a few already planned for this year but keep looking on [www.aviationheritagelincs.co.uk](http://www.aviationheritagelincs.co.uk) where updates will be announced.

## WHERE TO VISIT TO LEARN MORE ABOUT THE HISTORY OF AVIATION AND THE HERITAGE OF 'BOMBER' COUNTY

### Metheringham Airfield Visitor Centre

Metheringham Airfield Visitor Centre  
Westmoor Farm, Martin Moor,  
Metheringham, Lincoln LN4 3WF

Tel: 01526 353879

[www.metheringhamairfieldmuseum.co.uk](http://www.metheringhamairfieldmuseum.co.uk)

### RAF Coningsby – Battle of Britain Memorial Flight

Baxter Close, Coningsby, Lincoln LN4 4SY  
Tel: 01522 782040

[www.raf.mod.uk/bbmf/visitorscentre/k](http://www.raf.mod.uk/bbmf/visitorscentre/k)

### RAF Scampton Heritage Centre

RAF Scampton, Lincoln LN1 2ST  
Tel: 01522 738361

[www.raf.mod.uk/rafscampton/aboutus/location.cfm](http://www.raf.mod.uk/rafscampton/aboutus/location.cfm)

### RAF Ingham Heritage Centre

The Memorial Garden is already open to the public on Sunday mornings only.  
RAF Ingham Heritage Centre, Middle Street, Fillingham, Gainsborough DN21 5BU

[www.rafingham.co.uk](http://www.rafingham.co.uk)

### RAF Digby Sector Ops Museum

Cuckoo Lane, Digby, Lincolnshire LN4 3LH  
Tel: 01526 327272

[www.raf.mod.uk/rafdigby/aboutus/sectoropsmuseum.cfm](http://www.raf.mod.uk/rafdigby/aboutus/sectoropsmuseum.cfm)

### RAF Wickenby Memorial Collection

The Control Tower, Wickenby Aerodrome, Langworth, Lincoln LN3 5AX  
Tel: 01673 885000

[www.wickenbymuseum.co.uk](http://www.wickenbymuseum.co.uk)

### RAF Waddington Heritage Centre

RAF Waddington, Lincoln LN5 9NB  
Tel: 01522 727367

[www.raf.mod.uk/rafwaddington/aboutus/heritagecentre.cfm](http://www.raf.mod.uk/rafwaddington/aboutus/heritagecentre.cfm)



BATTLE OF BRITAIN  
MEMORIAL FLIGHT





### **Lincolnshire Aviation Heritage Centre – RAF East Kirkby**

Lincolnshire Aviation Heritage Centre, East Kirkby, Spilsby PE23 4DE

Tel: 01790 763207

[www.lincsaviation.co.uk](http://www.lincsaviation.co.uk)

### **Thorpe Camp Visitor Centre**

Tattershall Thorpe, Lincoln LN4 4PL

Tel: 01526 342249

[thorpecamp.wixsite.com/visitorscentre](http://thorpecamp.wixsite.com/visitorscentre)

### **Cranwell Aviation Heritage Museum**

Heath Farm, North Rauceby, Sleaford, Lincolnshire NG34 8QR

Tel: 01529 488490

[community.lincolnshire.gov.uk/cranwellaviationheritagemuseum](http://community.lincolnshire.gov.uk/cranwellaviationheritagemuseum)

### **MAJOR EXHIBITION**

A Century of Valour – 25th January to 15th March 2020 The Collection, Lincoln. This special exhibition will focus on the county's proud aviation history during the First World War, Second World War and Cold War, including animal bravery.

The exhibition will include medals and decorations as well as one of the most famous Victoria Crosses in British military history – that of Wing Commander Guy Gibson, Dambuster. Stories will be told through film and displays plus a wide array of other original artefacts, personal memorabilia and paintings by renowned aviation artist, Simon Attack.

You can book tickets online at:

[www.thecollectionmuseum.com/valour](http://www.thecollectionmuseum.com/valour) or on the door at The Collection Museum, Danes Terrace, Lincoln LN2 1LP

### **75TH ANNIVERSARY OF THE END OF THE WAR IN EUROPE**

A three-day international celebration of this important anniversary will take place from Friday 8th May to Sunday 10th May 2020.

The 75th anniversary of when the carnage

came to an end on 8th May 1944 will be the opportunity to reflect on the enormous sacrifice and courage of people from all walks of life during this frightening period.

Across the county there are events that will mark the occasion:

### **Friday 8th May 2020 (Bank Holiday)**

3pm – The Nation's Toast to the Heroes of World War 2.

To coincide with the playing of Battle's O'er, and in association with the British Beer and Pub Association and its members, thousands of pubs throughout the United Kingdom, Channel Islands and the Isle of Man will be asking their customers to raise a glass at 3pm and take part in The Nation's Toast to the Heroes of World War 2.

Local authorities, town and parish councils, along with individuals and community groups etc, are also encouraged to stop what they are doing at 3pm on 8th May and raise a glass of refreshment of their choice and take part in the Nation's Toast too.

### **Friday 8th May 2020 (Bank Holiday)**

6.55pm (Local Time) – A Cry for Peace Around the World.

Town criers and other people around the world will be undertaking a special international Cry for Peace Around the World in all manner of locations.

### **Friday 8th May 2020 (Bank Holiday)**

7pm – Ringing out for Peace.

In association with the Central Council of Church Bell Ringers, bells in cathedrals, churches and other locations will ring out at 7pm in a collective celebration of peace.

### **Parties and Celebrations – Saturday 9th and Sunday 10th May 2020**

Many communities are organising street parties, 40s themed dances or special events during a weekend of celebrations and parties. Look out for more local information nearer the time.

### **INTERNATIONAL BOMBER COMMAND CENTRE**

A story of discovery, education and remembrance. The IBCC is one of the most comprehensive records of Bomber Command in the world. During the Second World War, more than a million men and women supported Bomber Command with the majority coming from the UK and Commonwealth countries. Out of the 125,000 aircrew who served, it has been predicted that around 72% were killed or seriously injured. The digital archive of losses, memorial walls and iconic spire commemorate those aircrew who significantly changed the outcome of World War Two.

Highlights for 2020 include: 25th April – Anzac Day. The Australian Defence Minister and other dignitaries will be unveiling the stone to the 6,500 Australians who lost their lives in Bomber Command, which was placed by the Australian War Memorial CEO, Dr Brendan Nelson.

8th May – the IBCC will be marking the national VEDay 75 celebrations with tributes which will include pipers, a lone bugler and the reading of a specially commissioned poem 'Tribute to the Millions'. The Op Manna/VE Day flower bed will also be officially unveiled.

10th May – the annual motorbike event, InSpire, will take place at which over 800 bikes will ride to the centre to raise awareness and funds and will attend a service of thanksgiving and remembrance at the Memorial. This will include camping the previous night with live music and BBQ.

15-16th August – 1940s weekend which will include a host of themed activities and stands and the annual Black Out Blitz Ball on the Saturday evening.

13th September – Wings and Wheels, the Centre's classic car and aviation Heritage event.

IBCC is open 9.30am–5pm (winter months until 4pm) Tuesday to Sunday every week and open on Bank holiday Mondays. Closed 24th–27th, 31st Dec and 1st Jan.

Canwick Hill, Lincoln LN4 2RF  
Tel: 01778 421420

[www.internationalbcc.co.uk](http://www.internationalbcc.co.uk)



# Discover OUTDOORS

Explore the countryside

THE RIVER WITHAM

## BIKES, BOOTS AND BOATS – Get exploring

*Whether you prefer to meander along waterways, hike across the countryside or see some of the county's most scenic views from its many cycle routes, there are so many ways to discover Lincolnshire.*

### LIKE A DUCK TO WATER

If you are looking for a more relaxing way to see the county you can visit one of the many waterways. In the south you will find the Spalding Water Taxi which links Springfield's Shopping Centre and Festival Gardens with the town centre. If you want to have some time with your friends and family you can hire self-drive hire boats and treat yourself to a trip along the Welland. For those looking to extend their stay in the south of the county the Sleaford narrowboat is available for weekly hire.

Head further north in the county to the town of Boston and you can make the most of both river and sea cruising. Heading out to the Wash you will see some fantastic wildlife in their natural habitats.

If you are visiting Lincoln, a trip on the Brayford Belle is a must. Sit back, relax and enjoy the sights of Lincoln and the countryside from a different perspective aboard a 50-60 minute guided canal trip with a very entertaining commentary about Lincoln's past and present.





VISIT LINCOLNSHIRE  
ON TWO WHEELS



VIEWS OVER THE WOLDS

### PUT YOUR BOOTS ON

Lincolnshire is home to hundreds of miles of public highways, footpaths and bridal ways. There are routes for gentle strollers or energetic day-long challenges for the more adventurous. The 147-mile long Viking Way is a national footpath which runs the length of the county, or follow the traffic-free Water Rail Way along the former Lincoln to Boston railway. The Lincolnshire Wolds, a designated Area of Outstanding Natural Beauty, offers some of the most scenic routes with fascinating landscapes, flowing chalk streams and welcoming hamlets, villages and market towns. From the Lincoln Edge in the west to the Fenlands of the east, South Lincolnshire has an extremely varied landscape that has witnessed Bronze Age burials, Iron Age mints, roman forts, the Knights Templar, castles and abbeys. But these routes aren't only for history lovers! The stretch of England Coast Path along the coastline includes breathtaking vistas across expansive beaches and glimpses of native and migratory wildlife all year. Whether you want to roam with Ramblers, have an adventure with your kids, get snapping on a photography foray or take your pooch out for a guided 'walkies', there's something for everyone.

### FOLLOW THE YELLOW ROUTE!

**GET ON YOUR BIKE!**

Discover the Lindsey Trail, a unique, multi-user route for horse carriage drivers, cyclists and walkers. Lincolnshire has two main national cycle routes, 1 and 64. Route 1 is the national route starting along which will take you from the south of the county, through Lincoln and up to the north taking in some of Lincolnshire's Areas of Outstanding National Beauty. Route 64 takes in the south west of the county leading from Newark to Lincoln.

The national cycle network is not the only way to see the county by bike. The Georgie Twigg track is an off-road route between Lincoln and Doddington; the Witham Valley connects green parks and open spaces for walking or cycling. Longer routes include a Humber to the Wash trip or a 100-mile castle to coast adventure through beautiful landscapes. More information about these and cycling holiday packages can be found at [www.visitlincoln.com](http://www.visitlincoln.com)



VIKING WAY



# Discover GRAND HOUSES

Stately homes and magnificent gardens



DODDINGTON HALL

# Gardens AND GRAND HOUSES

*Explore magnificent manor houses and mansions which each have a rich history to tell. Here you will also find some of the most majestic gardens in the UK.*



BURGHLEY HOUSE



Burghley House, the 16th century home of the Cecil family, stands at the edge of Stamford. The breathtaking landscapes which surround it were designed by 'Capability' Brown and the Gardens of Surprise will delight your senses.

On a smaller scale but no less beautiful, Doddington Hall, near Lincoln, stands much as it would have done when it was designed in 1600. The kitchen and formal gardens are a pleasure to wander all year round with highlights such as Iris Week in early June being especially popular. In 2020 the biennial Doddington Sculpture Exhibition returns with work on show in the house and gardens by local, national and internationally renowned artists from 25th July to 6th September.

You have plenty of choice of other impressive stately houses including the fine Restoration architecture of Belton House, the grandeur of Grimsthorpe Castle or the Georgian country estate elegance of Gunby Hall. The Italian Garden at Belton was designed by Jeffrey Wyattville while Gunby Hall, a large country house near Skegness, boasts arch



BELTON HOUSE

pergolas of fruit trees and a walled garden to the rear.

In the north of the county, Normanby Hall, a classic country house, is home to a farming museum, costume gallery, Victorian walled garden and country park.

Post WWII many large houses in Lincolnshire had fallen into disrepair and were demolished but the walled gardens of some have survived and been restored.

These gardens have a magic unique to each location. Easton Walled Garden, near Grantham is a delight year round while offering themed events such as Sweet Pea Week during July.

The Walled Garden at Baumber is a work in progress where the rare double Victorian walls shelter such surprises as a wild swimming pond, borders of specimen plants and a woodland walk.



NORMANBY HALL

**GARDENS OF DELIGHT**

Walled Garden at Baumber, Horncastle  
[www.walledgardenbaumber.co.uk](http://www.walledgardenbaumber.co.uk)

Easton Walled Gardens, Grantham  
[www.eastonwalledgardens.co.uk](http://www.eastonwalledgardens.co.uk)

Burghley House, Stamford  
[www.burghley.co.uk](http://www.burghley.co.uk)

Belton House, Grantham  
[www.nationaltrust.org.uk/belton-house](http://www.nationaltrust.org.uk/belton-house)

Doddington Hall, Doddington, Lincoln  
[www.doddingtonhall.com](http://www.doddingtonhall.com)

Gunby Hall, Skegness  
[www.nationaltrust.org.uk/gunby-estate-hall-and-gardens](http://www.nationaltrust.org.uk/gunby-estate-hall-and-gardens)

Belvoir Castle, Grantham  
[www.belvoircastle.com](http://www.belvoircastle.com)

Grimsthorpe Castle, Bourne  
[www.grimsthorpe.co.uk](http://www.grimsthorpe.co.uk)

You will find details of gardens open for charity in 2020 at: [www.ngs.org.ok](http://www.ngs.org.ok)



# Discover JOSEPH BANKS

Naturalist and botanist

## EXPLORE BANKS CHURCHES IN *Lincolnshire*

In 2020 the Sir Joseph Banks Society, based in Horncastle will be commemorating the bicentenary of the death of Sir Joseph. Joseph Banks was born on the Revesby estate, 7 miles from the town. He first made his name in 1766 as a naturalist and botanist on expeditions to Labrador and Newfoundland but he is better known for sailing with Captain James Cook on his first great voyages of exploration to Brazil and Tahiti and six months later to Australia, New Zealand and the Pacific Islands. Joseph Banks collected more than 30,000 plant specimens on these expeditions and was president of The Royal Society for more than 40 years.

As part of the bicentenary celebrations the Society have devised a Banks Churches in

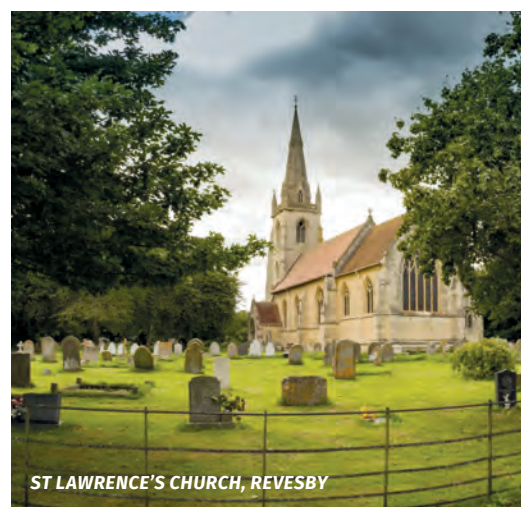
Lincolnshire Tour. You can enjoy this under your own steam or an executive coach tour for group visits can be booked which includes a guide, afternoon tea and visit to the Sir Joseph Banks Centre. To book this coach tour for your party contact: [2020@joseph-banks.org.uk](mailto:2020@joseph-banks.org.uk) for more information.

### THE TOUR ROUTE:

#### **St Lawrence's Church, Revesby**

*Blackey Lane, PE22 7NA*

The Banks family were owners of Revesby Hall for generations and the current church was built in 1891 to replace an earlier Georgian building built by Sir Joseph Banks' great-grandfather, owner of Revesby Abbey, in



ST LAWRENCE'S CHURCH, REVESBY





1733. This has replaced an earlier Norman church on the same site which was linked to the Cistercian abbey of Revesby. The Banks family memorial is at the west end of the north aisle and commemorates three generations of the Banks family.

### St Helen's Church, Mareham le Fen

Church Lane, PE22 7QU

The church dates from the 13th century and was partially rebuilt in 1879. In the north aisle is the tomb of James Roberts who sailed on the Endeavour with Sir Joseph Banks and Captain Cook. Roberts was one of six men chosen by Joseph Banks to help collect, draw and store the plant collections. He also wrote



a journal of his travels and retired back to his home village of Mareham le Fen where he died in 1826 aged 74.

### St Benedict's Church, Scrivelsby

B1183, LN9 6JA

The estate village of Scrivelsby is a short drive from Revesby and St Benedict's has evolved over the past eight centuries to feature a variety of architectural styles. The estate is the home of the Dymoke family who have held the title of King or Queen's Champions since the Norman Conquest.



### St Mary's Church, Horncastle

Church Lane, LN9 5HW

This wonderful medieval building is located in the centre of the town and is built of sandstone from nearby Spilsby. Sir Joseph Banks commissioned a town house in Horncastle, on the High Street which today is occupied by commercial businesses. There are several very impressive memorials in the church and above the arch leading to the south chapel are the Lincolnshire Scythes; weapons used by local farmers who took part in the Lincolnshire Rising of 1536. The Rising hoped to roll back the Dissolution of the Monasteries but the ringleaders were executed for treason.

Horncastle is worth exploring further. Why not enjoy a spot of lunch or afternoon tea in one of the excellent local eateries followed by a visit to The Joseph Banks Centre, Garden and Herbarium.

### The Joseph Banks Centre

1, Bridge Street, Horncastle LN9 5HZ

Tel: 01507 700012

[www.joseph-banks.org.uk](http://www.joseph-banks.org.uk)

## CHURCHES FESTIVALS IN 2020

The county is blessed with many magnificent churches and their heritage is wrapped into the history of Lincolnshire. The Lincolnshire Churches Trust organises an annual Bike, Ride and Stride event each September when many throw open their doors to visitors. Find out more at: [lincolnshirechurchestrust.org.uk](http://lincolnshirechurchestrust.org.uk)

There are also churches festivals specific to areas which show these beautiful buildings within their outstanding landscapes.



### West Lindsey's Churches Festival

9th-10th and 16th-17th May 2020.

95 beautiful churches to visit for free. This year's theme will be Adventurers and Pilgrims.

[www.churchesfestival.info](http://www.churchesfestival.info)



### Lincolnshire Wolds and Coast Churches Festival

29th-30th and August, 5th-6th September 2020. The 2nd festival will see 140 churches opening their doors for visitors to discover the unique stories and heritage within.

[www.lincswoldsandchurches.org](http://www.lincswoldsandchurches.org)





# WINE, DINE & RELAX

Petwood

ENJOY DELICIOUS FOOD  
AND A FRIENDLY ATMOSPHERE  
IN A BEAUTIFUL SETTING

Popular for Sunday lunches,  
afternoon teas, informal bar meals  
and AA Rosette restaurant dining

FOR FURTHER INFORMATION

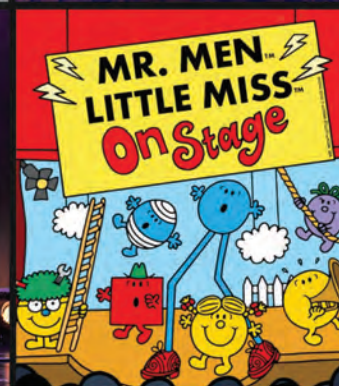
call Reception on 01526 352411  
or email [reception@petwood.co.uk](mailto:reception@petwood.co.uk)



PETWOOD HOTEL

STIXWOULD ROAD | WOODHALL SPA | LINCOLNSHIRE | LN10 6QG

[WWW.PETWOOD.CO.UK](http://WWW.PETWOOD.CO.UK)



MUSIC | DRAMA | COMEDY | TALKS | CINEMA

[WWW.TRINITYARTS.CO.UK](http://WWW.TRINITYARTS.CO.UK)

01427 676655

QUALITY LIVE  
ENTERTAINMENT IN  
GAINSBOROUGH



EXPERIENCE OUR AWARD  
WINNING DISTILLERY

WWW.BOTTOMLEYDISTILLERS.CO.UK

# Get weekly unlimited bus travel

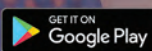
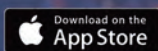
with our value for money

## megarider ticket

*Flexible travel to suit your needs*

available on bus and on the app

[stagecoachbus.com](https://stagecoachbus.com)



search Stagecoach Bus



**Stagecoach**



# Discover THE COAST

Fun for all the family



A NATURAL COASTLINE

# The coast FOR ALL SEASONS

*The Lincolnshire coastline offers bright lights and breath-taking beauty, as well as exhilarating contrasts season to season.*

Within a few miles or moments experiences can change from stunning skylines to bustling resorts; exhilarating thrills to unspoilt beauty. Here are some of the highlights.

## **A NATURAL COASTLINE**

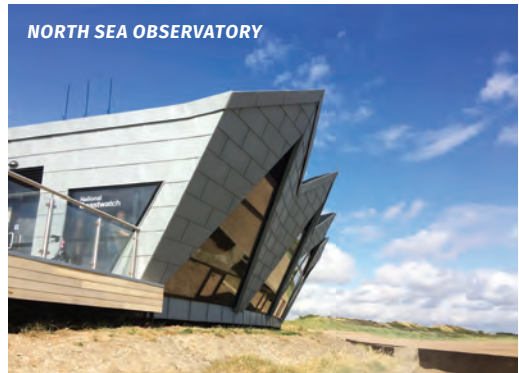
The Lincolnshire Coastal Country Park extends from Sandilands down to Chapel St Leonards and inland incorporates the villages of Huttoft, Mumby and Hogsthorpe. The coastal trail is part of the England Coast Path giving walkers the chance to explore

the wild natural beauty and wildlife of the salt marshes, dunes and sea.

## **NORTH SEA OBSERVATORY**

The purpose-built marine observatory at Chapel Point, Chapel St Leonards is an iconic addition to the beachfront with panoramic windows commanding a 180-degree view along the coastline and out to sea. There are excellent all year round facilities for families and those enjoying a nice quiet winter walk along the beach.

## **NORTH SEA OBSERVATORY**







### BUCKETS AND SPADES

Seaside towns like Skegness, Mablethorpe, Sutton on Sea and Cleethorpes attract the holiday crowds; ideal for families, they offer excellent sands and clean waters, perfect for a traditional bucket and spade holiday. Attractions include a donkey ride on Skegness seafront, the thrill of the roller coasters at Fantasy Island, Skegness or a more relaxing jaunt on the Sand Train which travels along Mablethorpe’s magnificent shoreline.

### ENTERTAINING WHATEVER THE WEATHER

If the weather is not so kind there are plenty of indoor attractions to keep



you amused. Visit the Natureland Seal Sanctuary where orphaned or injured seals washed upon the county’s beaches are cared for. Enjoy the warm waters of Butlin’s Splash Waterworld or relax at a show at the Embassy Centre. On your Marques is a must for model car enthusiasts while Church Farm Museum gives a glimpse of bygone times.

### RESERVES AND WILD SPACES

The Lincolnshire coastline is one of the focal points of the migration of thousands of birds from Iceland, the Arctic, Siberia and North and South America in spring, autumn and early winter. Explore wildlife reserves just a short drive from the promenades and crowds. The RSPB

operates sites at RSPB Frampton Marsh and RSPB Frieston Shore. The Lincolnshire Wildlife Trust manages nearly 100 reserves and wild spaces in the county encompassing habitats such as grazing marshes, ancient woodlands, reeds and meadows. Donna Nook is a sanctuary for a colony of grey seals who come ashore to give birth during late autumn. A spectacular wildlife scene which attracts thousands of onlookers each year.

And don’t forget when you come to enjoy these wonderful coastal assets there is an excellent choice of accommodation to suit all tastes and budgets. Look at the section at the back of this guide to find some of the best.







BOOK ONLINE AND SAVE  
UP TO  
**40%**  
ON DAY VISITS



Click **BUTLINS.COM/DAYVISITS**

Up to 40% saving is based on full day visit cost at Butlin's Skegness.





## ALFORD CRAFT MARKETS ARE HELD AT:-

Spring Bank Holiday Weekend  
&  
August Bank Holiday Weekend  
at  
Alford Manor House Grounds  
West Street, Alford, Lincs, LN13 9HT

Also  
At Easter  
& Christmas Weekends  
at  
Alford Corn Exchange  
Market Place, Alford, Lincs, LN13 9EB



**Come and see our Alford Craft Market Shop & Centre** (open all year),  
1 West Street, Alford, LN13 9DG.

For further information please visit our website at [www.alfordcraftmarket.co.uk](http://www.alfordcraftmarket.co.uk)  
or our facebook page at [www.facebook.com/alfordcraftmarket](http://www.facebook.com/alfordcraftmarket)



## Epworth Old Rectory

Once home to a remarkable family – the Wesleys  
Founders of the Methodist movement

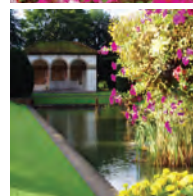


A warm welcome awaits inside this wonderful Queen Anne period house, come and visit where you will hear the stories of the family who lived there 300 years ago.

Please see our website for our event and exhibition programme, opening times and admission prices  
[www.epwortholdrectory.org.uk](http://www.epwortholdrectory.org.uk)

Epworth Old Rectory, 1 Rectory Street, Epworth, North Lincolnshire DN9 1HX

**Tel: 01427 872268**



Admission  
to the Museum  
and Gardens  
is **FREE**



**Ayscoughfee Hall**  
Museum and Gardens

**Welcome to the  
Ayscoughfee experience  
One that all the family can enjoy!**

### Hall & Museum Open:

Wednesday - Sunday 10.30am - 4pm  
(Closed Monday & Tuesday)  
(Open Bank Holidays 10.30am - 4pm)

### Gardens Open:

Monday - Saturday 8am until dusk  
Sunday - 10am until dusk

### Pavilion Cafe Open:

January - March 10am - 3pm  
April - September 10am - 5pm  
October - December 10am - 3pm

### Licensed for Weddings



Supported by the  
Heritage Lottery Fund



Ayscoughfee Hall Museum

Churchgate, Spalding, Lincolnshire. PE11 2RA

tel: 01775 764555

email: [museum@sholland.gov.uk](mailto:museum@sholland.gov.uk) [www.ayscoughfee.org](http://www.ayscoughfee.org)

## Coastfields

Choose from 7 fantastic holiday  
parks along the Lincolnshire coast!

- ✓ Holiday Homes & Lodges for sale
- ✓ Caravan holidays
- ✓ Luxury Lodge breaks with hot tubs available
- ✓ Touring, Camping & Glamping holidays
- ✓ Fantastic Facilities
- ✓ 6 entertainment venues



Call us on **01754 872592**

Book online at [www.coastfields.co.uk](http://www.coastfields.co.uk)



**Coastfields**



# Discover MAYFLOWER 400

Pilgrim Roots

## Spectacular events throughout 2020



1620—2020  
*Mayflower*  
400™

Steering our future,  
inspired by the past.

Mayflower 400  
2020

2020 marks the 400th anniversary of the sailing of the Mayflower from Plymouth UK to Plymouth Massachusetts.

Gainsborough and the Pilgrim Roots region have a special connection to the Mayflower anniversary as Separatist movements originated in this region that led them on their journey to America.

Join in with spectacular events that will commemorate this significant historical moment and discover fascinating places to visit throughout 2020.

### **GAINSBOROUGH OLD HALL**

*Parnell Street, Gainsborough, DN21 2NB*

Home to one of England's best preserved timber-framed manor houses – Gainsborough Old Hall dates back to 1460. Separatists were thought to have worshipped in secret at the Old Hall with the permission of its sympathetic owner, merchant William Hickman.

Their preacher, John Smyth, was a strong influence on the Mayflower Pilgrims, and is generally considered to have later been a founder of the Baptist churches. Smyth had a large following of sixty or seventy people who were being pushed to conform to the rules of the established Church. Unable to emigrate legally without permits they slipped away from Gainsborough in 1607, escaping to Holland.

### **UNITED REFORMED CHURCH**

*Church Street, Gainsborough, DN21 2JR*

The United Reformed Church in Gainsborough stands as a memorial to John Robinson, Pastor of the Pilgrims and one of the founders of the Separatist movement.

### **MAYFLOWER ROOM**

*Open First and Third Thursday of the Month,  
10am to 11.30am*

To commemorate the anniversary of the



# DISCOVER | GAINSBOROUGH



GAINSBOROUGH OLD HALL

Sailing of the Mayflower, the church have created a 'Mayflower Room' which is an impressive and informative display of the local history of the area's Separatist ancestors, who played an important role in the Mayflower Pilgrims' voyage in 1620.

[www.gainsborough-united-reformed-church.org.uk](http://www.gainsborough-united-reformed-church.org.uk)

## EXHIBITION: GAINSBOROUGH AND THE MAYFLOWER PILGRIMS

Open from January 2020

Discover the untold stories of the Gainsborough Separatists as they fled to Amsterdam in 1608 in search of religious freedom. Departing from the River Trent on a boat called the Francis, they travelled to Immingham, collecting Separatists along the way. In 1620, some of them made a pioneering voyage as Pilgrims on the Mayflower.

[www.gainsborougholdhall.com](http://www.gainsborougholdhall.com)

## PILGRIMS GALLERY

Bassetlaw Museum, 40 Grove St, Retford, DN22 6LD. Open Monday to Saturday, 10am to 4.45pm

The Pilgrims Gallery commemorates the life of William Brewster, one of the region's most famous sons, as part of the Mayflower 400 commemorations. The town is in the heart of an area that was a hotbed of radical religious thinking in the 17th century, home to many of the Separatists who organised the Mayflower's pioneering voyage to America.

[bassetlawmuseum.org.uk](http://bassetlawmuseum.org.uk)

## THE MAYFLOWER PILGRIMS CENTRE

11 Churchgate, Retford, DN22 6PA

Open Monday to Saturday, 10am to 4pm

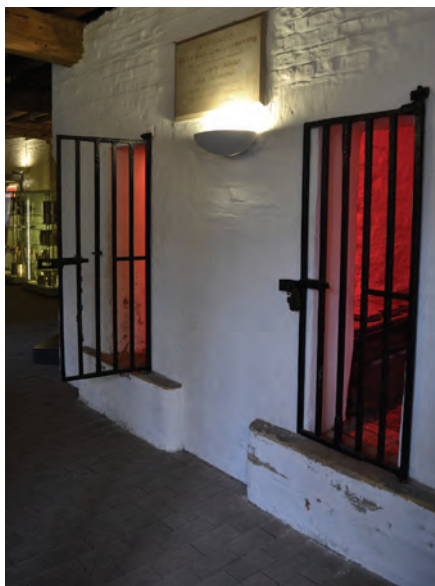
Discover more about the Pilgrims who came from this area and its claims to be the birthplace of modern America and many of the non-conformist, English-speaking Christian denominations.

[www.retfordhub.org](http://www.retfordhub.org)

## BOSTON GUILDHALL

Boston Guildhall, South Street, Boston, PE21 6HT. Open every Wednesday, Thursday, Friday and Saturday, 10.30am to 3.30pm

In 1607, a group of Pilgrims were betrayed in Boston as they planned to defy the authority of the English church and escape to Holland. They were held and tried at the Guildhall which now houses a museum telling the history of the town.



## PILGRIM EXHIBITION

Open from Saturday 28 September 2019.

This exciting exhibition reveals fascinating information that will change how the Pilgrim story is viewed in Boston and how the historic town's connections had a profound influence on the foundations of America.

Original documents will be on display telling the Pilgrims' story including a chance to see the cells where they were held.

[www.mybostonuk.com/bostonguildhall/events](http://www.mybostonuk.com/bostonguildhall/events)



## IMMINGHAM MUSEUM

Civic Centre, Pelham Road, Immingham, DN40 1QE. Open Tuesdays, Wednesdays, Fridays and Saturdays 1pm to 4pm

Learn about the town's history and its connection to the momentous voyage of the Mayflower. Exhibitions also include the history of Immingham Dock, the Great Central Railway, and an extensive model railway. Free admission, donations welcome.

## Pilgrim Monument

Standing in honour of the Pilgrims' journey with a stone from Plymouth Rock, near St Andrew's Church.

## Coming soon...

A new heritage trail to link up key sites including Immingham Museum, St Andrew's Church and the Pilgrim Memorial.

## North Nottinghamshire

[www.imminghammuseum.org](http://www.imminghammuseum.org)



**EXHIBITION: Gainsborough and the Mayflower Pilgrims**

Opens early January 2020. Gainsborough, Old Hall, DN21 2NB

**TALK: Adrian Gray's Lincolnshire Mystery and Mayhem: Tales of Darkness and Light**

Thurs 9 January 2020, 10am Gainsborough U3A, Methodist Church, DN21 2DP

**TALK: Adrian Gray's The Mayflower Pilgrims: Why they came from here**

Sat 11 January 2020, 2pm, Boston Preservation Society, Fydell House, Boston, PE21 6HU

**EXHIBITION: The Story of Mayflower II. Tues 28 January to Tues 5 May 2020, Gainsborough Heritage Centre, DN21 2HS**

**MUSIC: Seth Lakeman's A Pilgrim's Tale Tour**

Thurs 6 February 2020, St Andrews Church, Immingham, DN40 2EU

Sat 8 February 2020, Trinity Arts Centre, Gainsborough, DN21 2AL

Sun 9 February 2020, Blackfriars Theatre & Arts Centre, Boston, PE21 6HP

**ARTS: Mayflower Macrame Keyrings with Rachel Carter**

Sat 15 February 2020, Worksop Library, S80 2BP

Mon 17 February 2020, West Bridgford Library, NG2 6AT

Fri 21 February 2020, Beeston Library, NG9 1AE

Sat 22 February 2020, Mansfield Library, NG18 1NH

**EXHIBITION: Rachel Carter's Spirit of Mayflower: Language of Sculpture.**

Tues 3 March to Sun 19 April 2020. Worksop Library, S80 2BP

**TALK: Adrian Gray's From Cranmer to the Mayflower Pilgrims**

Tues 3 March 2020, 8pm. Thomas Cranmer Centre, Aslockton, NG13 9AL

**TALKS: BCH's Freedom & Tolerance Forum**

Sat 7 March 2020, 10am\*. The Well, Retford, DN22 7BD

**TALK: Pilgrims & Prophets' Mayflower Pilgrims and their Origins**

Weds 18 March 2020, 7pm. The Crossing, Worksop, S80 2AT



**EXHIBITION: Pilgrims Art Exhibition**

Thurs 19 to Sun 22 March 2020, 12-4pm\* St Helena's Church, Austerfield, DN10 6QU

**TALK: Dr Anna Scott's Pilgrim Roots & Mayflower 400**

Weds 25 March 2020, 2pm. Worksop Library, S80 2BP

**EXHIBITION: Schools' Pilgrim Exhibition**

April to May 2020. Gainsborough Old Hall, DN21 2NB

**TOUR: Pilgrims & Prophets' Grantham, Aslockton & Bottesford: Thomas Cranmer and the Reformation**

Sat 4 April 2020. Various

**SPORT: Boston Mayflower 400 Marathon UK**

Sun 19 April 2020. Boston Market Place, PE21 6NN

**EXHIBITION: Rachel Carter's Spirit of Mayflower: 'The Pilgrim Woman' Dress**

Sat 4 April to Sun 17 May 2020 The Collection, Lincoln, LN2 1LP

**EXHIBITION: Wampum: Stories From The Shells Of Native America**

Sat 4 April to Sun 17 May 2020. The Collection, Lincoln, LN2 1LP

**SUMMER 2020 PILGRIMAGE**

**EVENT: Flight Of The Separatists**

Sun 10 May 2020\*. Gainsborough

**EXHIBITION: The American Connection**

Tues 12 May to Tues 21 July 2020. Gainsborough Heritage Centre, DN21 2HS

**EVENT: Immingham's Pilgrims Day**

Tues 12 May 2020\*. Immingham

**VISIT: West Lindsey Churches Festival**

Sat 9 - Sun 10 & Sat 16 - Sun 17 May 2020\*. Various churches, West Lindsey District

**VISIT: John Robinson Memorial Church Open Weekend**

Sat 16 May 2020, 10am-4pm\*. Sun 17 May 2020, 2-4pm\*. United Reformed Church, Gainsborough, DN21 2JR

**TALK: BGU Annual History Lecture: The Making of the Atlantic World**

Wed 20 May 2020, 4pm. Bishop Grosseteste University, Lincoln, LN1 3DX







**EXHIBITION: Rachel Carter's Spirit Of Mayflower: 'The Pilgrim Woman' Dress**  
 Mon 25 May to Fri 31 July 2020.  
 Gainsborough Old Hall, DN21 2NB

**SERVICE: Mayflower Commemoration**  
 Sat 13 June 2020, 2pm\*. United Reformed Church, Gainsborough, DN21 2JR

**EXHIBITION: Mayflower: Voyages of Discovery**  
 August to September 2020. Lincoln Cathedral, LN2 1PX

**VISIT: Patronal event: Pilgrims and Quilts**  
 Sat 15 & Sun 16 August 2020\*. St Helena's Church, Austerfield, DN10 6QU

**VISIT: Heritage Open Days 2020**  
 Fri 11 to Sun 20 September 2020\*. Various heritage sites on the Pilgrims Trail

**MUSIC: Mayflower 400 Organ Recital**  
 Sat 12 September 2020, 2pm\*, United Reformed Church, Gainsborough, DN21 2JR

**EXHIBITION: Beyond the Mayflower 1620-2020**  
 4th September to 6th December 2020  
 University of Nottingham

**ANNIVERSARY: The Mayflower's Voyage**  
 Weds 16 September 2020. Mayflower 400 Compact Partners

**PILGRIMS FESTIVAL 2020**

**EVENT: Gainsborough's Illuminate & Music: Mayflower Concert**  
 Sat 14 November 2020\* Gainsborough

**FILM: From The Few To The Many**  
 Thurs 19 November 2020. Worksop Savoy, S80 1HP

**EVENT: Retford's Illuminate**  
 Fri 20 November 2020\* Retford

**EXHIBITION: Arts Weekend**  
 Sat 21 & Sun 22 November 2020\*. Babworth Church, Retford, DN21 8EP

**EVENT: Austerfield & Bawtry's Illuminate**  
 Sun 22 November 2020\* Bawtry

**EVENT: Worksop's Illuminate**  
 Weds 25 November 2020\*. Worksop

**EVENT: Boston's Illuminate**  
 Thurs 26 November 2020\*. Boston

**FOOD: Thanksgiving Dinner**  
 Thurs 26 November 2020. Spencer's on The Square, Retford, DN21 6DJ

**EVENT: Immingham's Illuminate**  
 Fri 27 November 2020\*. Immingham

**FOOD: Thanksgiving Dinner**  
 Sat 28 November 2020 Burton Hall, Immingham

**\* Denotes FREE event (other events are ticketed) For further information see [www.pilgrimroots.co.uk/events](http://www.pilgrimroots.co.uk/events)**







### **MAYFLOWER: VOYAGES OF DISCOVERY, LINCOLN CATHEDRAL**

*August and September 2020*

Come join us for a rare book exhibit about the Pilgrim Separatists and their voyage of discovery with materials from the Wren Library at Lincoln Cathedral and The Spalding Gentlemen's Society.

Original editions from the Pilgrims' clandestine press in Leiden will be featured, along with first-hand accounts of life on the Plymouth Plantation, and period atlases and navigational treatises including explorer John Smith's Sea Grammar.

Normal Admission applies. Sponsored by: Lincoln Cathedral and the University of Lincoln

#### **Opening Times:**

**August: Monday to Saturday 11am – 3pm**

**September: Monday to Friday 1pm – 3pm, Saturdays 11am – 3pm**

### **WAMPUM: STORIES FROM THE SHELLS OF NATIVE AMERICA**

*Saturday 4 April to Sunday 17 May 2020*

This touring exhibition unites contemporary indigenous artists and educators in the USA with museums and historic collections in Britain.

Wampum belts are stories of communities and culture. This exhibition centres on a newly crafted wampum belt created by the Wampanoag people of Massachusetts alongside historic material from the British Museum. Together, they explore the history, art and culture of the Native Americans who met the passengers of the Mayflower. Wampanoag artists share their story through images, ideas and wampum – the sacred shells of Native America.

Wampum: Stories from the Shells of Native America is presented by The Box, Plymouth and supported by Arts Council England as part of Mayflower 400.







### GUIDED TOURS

Gainsborough and West Lindsey have a unique place in Christian and American history as the place from which the 'Pilgrims' began their journey, where the English-speaking Baptists began and where key influencers of the First Amendment lived.

Whether you're visiting for a day or more, take time to discover our region's Pilgrim Roots where changes in English religious law and social life would divide the nation.

These new and exciting tours will allow visitors to enjoy an immersive experience and to discover the stories of the Mayflower Pilgrims long before they set sail in 1620.

For more information on booking guided tours or to try a self-guided tour

visit [www.discovergainsborough.com/pilgrim-roots](http://www.discovergainsborough.com/pilgrim-roots) or the official Mayflower400 website [www.mayflower400uk.org/visit/guided-tours](http://www.mayflower400uk.org/visit/guided-tours).

### PILGRIMS TRAIL

Explore the heritage sites with special connections to the Mayflower Pilgrims' story across Lincolnshire, Nottinghamshire and South Yorkshire. This 40-mile circular self-driven route features Gainsborough and other associated sites where some of the Pilgrims lived, worked and prayed before they began their new lives in Holland and America.

### DOWNLOAD THE MAYFLOWER 400 APP!

You can also download the Mayflower 400 app

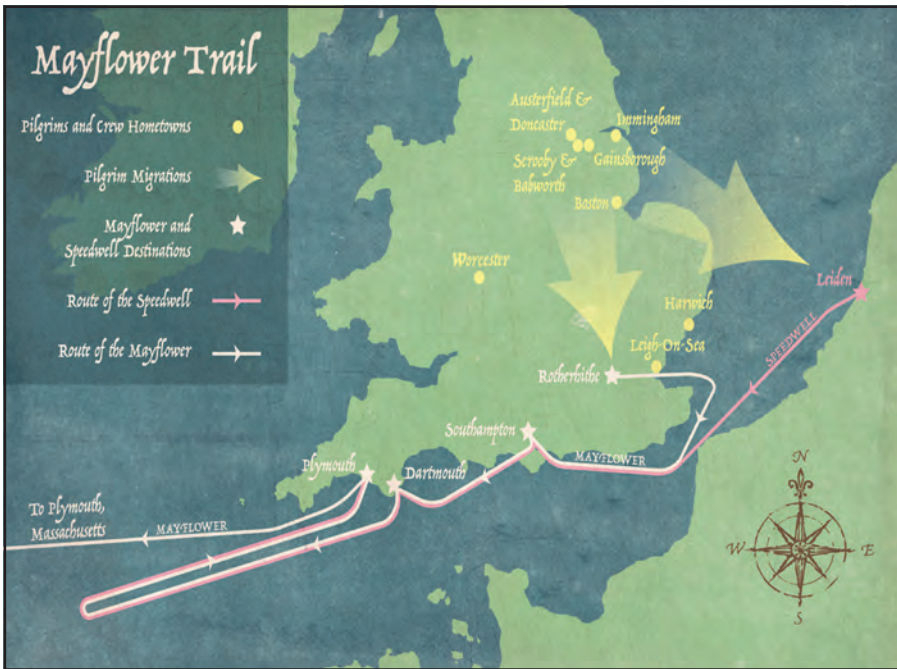
where you can enjoy free, self-guided walks and driving tours of each of the villages, towns and cities connected to the Mayflower.

Available on Apple iOS or Android phone. Go to [www.mayflower400uk.org/app](http://www.mayflower400uk.org/app) to find out more or search for Mayflower 400 in your app store.

*Some of these events have been made possible with thanks to Arts Council England and The National Lottery Heritage Fund.*



For more information visit:  
[www.discovergainsborough.com/pilgrim-roots](http://www.discovergainsborough.com/pilgrim-roots)  
[www.pilgrimroots.co.uk](http://www.pilgrimroots.co.uk)  
[www.mayflower400uk.org.uk](http://www.mayflower400uk.org.uk)  
[pilgrimroots2020@west-lindsey.gov.uk](mailto:pilgrimroots2020@west-lindsey.gov.uk)  
 Facebook: /PilgrimRoots  
 Twitter: @PilgrimRoots  
 Instagram: @pilgrimroots





## Discover DELICACIES

A flavourful county



UNCONVENTIONAL DISTILLERY

# GOOD TASTES OF *Lincolnshire*

*Caroline Bingham, editor of Lincolnshire Life magazine, has been visiting and writing about the county's abundance of excellent food and drink producers, fine eateries and delicious produce for more than twenty years. Here she gives some tips on how to make the most of this bountiful and welcoming county.*





Lincolnshire has a long tradition of rearing and processing pork which originates from our rural and self-sufficient communities of the past. A review of the county's food has to include Lincolnshire Sausages, still tasty favourites which draw crowds of up to 15,000 to the annual Sausage Festival in Lincoln Castle each October. To appreciate the versatility of pork, the best quality, traceability and flavour go to an independent butcher where their own recipe pork pies, haslet, bacon, sausage rolls, Lincolnshire chine, hams, roasts... and of course sausages, are not just a local dish but a passion for each producer with recipes often passed from one generation to the next.

Grimsby may not have vast fishing fleets unloading their catches at the docks these days but the town is home to one of the largest fish markets in the UK and many processors. Delicious fresh fish is on the menu at many eateries, from fish and chip shops to gourmet pubs and fine dining restaurants – the best offering catches of the day.

Local smokeries such as Alfred Enderby of Grimsby, Smith's Smokery at Boston or Belleau Smokery located near Louth produce wonderful smoked salmon, haddock, trout, mackerel and wild eel as well as smoked meats.

The rich fields of Lincolnshire grow a wide range of produce which you can find in supermarkets, farm shops and the meals you eat every day. The lush grass nurtures cattle including our own Lincoln Red beef herds. Milk is used to make wonderful local cheeses such as Lincolnshire Poacher, Cote Hill Blue and Heart of Lincolnshire mature cheddar from Lymn Bank Farm.

Your afternoon tea may include Lincolnshire Plum Bread; a delicacy rich in fruit and spices, with each baker having

their own secret recipe which has been passed through generations. Which will be your favourite? Names to look out for are Myers Quality Bakers, Welbourne Bakery, Modens, Curtis's and Pocklington's. Many of these independent growers, producers and outlets are members of Select Lincolnshire or Taste Lincolnshire and have been winners in our own 'Taste of Excellence' competition. Look out for logos on products, shop window stickers and winner's certificates as a sure sign of local quality and great taste.

Afternoon Tea has been elevated to a fine art in recent years with creative concepts and seasonal themes making truly memorable tea time treats. There is a huge variety of choice of location from quirky tea shops to luxury hotel dining rooms but I would always recommend pre-booking where you can to get the most from your experience – and of course the best choice of cakes!

In north Lincolnshire you can follow the Teapot Trail which has details of more than fifteen tea shops from Barton upon Humber to Kirton in Lindsey; from Immingham to Epworth. Find out more at: [www.tourismleafletsonline.com](http://www.tourismleafletsonline.com)

Wash all this down with a choice from the 'tea menu' which many eateries offer. There are some excellent blends from Stokes of Lincoln or Lincoln Tea & Coffee Company which will excite your palate. Locally brewed beer from Batemans, FAB Brewery or Eight Sailed Brewery is a refreshing and delicious accompaniment too. In 2016, Pin Gin was launched by Bottomley Distillers in Louth. It is now a nationally known brand which, along with Lincoln Gin, Unconventional Distillery rum, and artisan vodka can be found on bar and farm shops shelves across the county.

For many years Lincolnshire Life magazine has been running an annual awards scheme, 'Taste of Excellence', to identify and celebrate the finest amongst our food, drink and hospitality businesses. Nominations are accepted on our website [www.lincolnshirelife.co.uk](http://www.lincolnshirelife.co.uk) from April to August each year so do put forward your favourites in 2020.

Finally, on our website you will also find reviews, tea trails and downloadable copies of Lincolnshire Life and Good Taste Lincolnshire, the foodies' magazine for the county which we produce in association with Select Lincolnshire and Taste Lincolnshire. Bon appetite!







*We bake a selection of delicious breads, savouries, cakes & desserts.*

*Using traditional techniques and the finest ingredients we develop the real taste of our products.*

*Full of flavour with no preservatives or enhancers.*



**BRITAIN'S BEST BAKERY**  
**BAKER OF THE YEAR**

*Shops: Exton Bakery, Market Harborough, Oakham, Stamford, Oundle & West Bridgford*

[www.hambletonbakery.co.uk](http://www.hambletonbakery.co.uk)



SPECIAL EDITION  
**CHOCOLATE**

HAND MADE CHOCOLATE

- Every flavour to choose from.
- Drop in for thick, hot chocolate, tea, coffee, cake and sample our handmade chocolate.
- All our chocolate is NUT FREE and GLUTEN FREE. Our dark chocolate is also LACTOSE FREE.
- Wedding favours.
- Call and ask about our demonstrations and talks suitable for groups of 5-20 people approx.



01673 844073 Open 7 days a week

The Chocolate Drop, Market Rasen, Lincs LN8 3RH

[www.specialeditionchocolate.co.uk](http://www.specialeditionchocolate.co.uk)

For the very best antique and home shows look no further than Lincolnshire Showground...



**2020  
DATES**

**Antiques & Home Show**

**Vintage Flea Market**

1st April / 3rd June

19th Jan / 16th Feb

12th August / 7th October

8th March / 19th April

2nd December

10th May / 19th July

(Largest in the UK)

13th Sept / 18th Oct / 15th Nov

Postcode: LN2 2NA

[www.asfairs.com](http://www.asfairs.com)



## Caistor Heritage Centre & Cafe

- Breakfasts
- Light lunches and daily specials
- Children's meals
- Delicious home made cakes and scones
- Cyclists & walkers are welcome

**Bookings: 01472 851605**

Open Mon-Sat 09.00-16.00

Sunday and Bank Holidays 10.00-14.00

Fully Accessible

Dogs & Groups Welcome



28ploughhill@gmail.com

28 Plough Hill, Caistor LN7 6LZ

[www.28ploughhill.co.uk](http://www.28ploughhill.co.uk)

NATIONAL AWARD WINNING DAIRY ICE CREAM & SORBET



NATIONAL AWARD WINNING DAIRY ICE CREAM & SORBET, OVER 65 FLAVOURS, LICENSED CAFE/ICE CREAM PARLOUR. BREAKFAST, LUNCH AND AFTERNOON TEAS, HOME MADE BAKING, ICE CREAM SUNDAES, CREPES AND WAFFLES. LOCALLY SOURCED PRODUCE. SUNDAY LUNCHEONS. OUTSIDE SEATING AREA - OUTSIDE TABLE TENNIS, PLAY AREA. CRAZY GOLF. WEST LINDSEY 5 STAR FOOD HYGIENE AWARD. OPEN 7 DAYS A WEEK. FREE WI-FI AVAILABLE. VISIT OUR OTHER ICE CREAM PARLOURS IN BRIGG, DN20 8BS AND BRUMBY, DN16 2AU.

OLD HALL FARM, BLYTON, GAINSBOROUGH, Lincs, DN21 3LA

TEL: 01427 628355 - EMAIL: [BLYTONICECREAM@GMAIL.COM](mailto:BLYTONICECREAM@GMAIL.COM)

[WWW.BLYTONICECREAM.CO.UK](http://WWW.BLYTONICECREAM.CO.UK)

## Seacroft Mobility Ltd

HERE TO HELP



**Your Local Mobility Stores**

Mablethorpe - Ingoldmells - Skegness - Boston

01507 473500 01754 874731 01754 762916 01205 363408

Spalding - Lincoln - Nottingham

01775 769638 01522 523300 0115 920 4260

[www.seacroftmobility.com](http://www.seacroftmobility.com)



**Largest  
HIRE fleet  
in Lincolnshire  
BOOK  
NOW**

Sales - Service - Repair





A scenic photograph of a wide, sandy beach under a bright blue sky with scattered white clouds. In the foreground, there are clumps of tall, green and yellow coastal grasses. The beach stretches out to the sea, where a few small figures of people can be seen in the distance. The overall atmosphere is peaceful and inviting.

# Lincolnshire's Natural Coast.

The biggest of skies and the widest of beaches on Lincolnshire's Natural Coast, kick off your shoes, explore and unwind.

Visit our website for walks, nature reserves, local visitor attractions, nearby coastal resorts, historic market towns and the best places to park.

---

**[www.lincsnaturalcoast.com](http://www.lincsnaturalcoast.com)**



# Discover **ATTRACTIONS**

Top days out for 2020



# Activities

## FOR ALL THE FAMILY





STAMFORD SHAKESPEARE COMPANY

#### STAMFORD SHAKESPEARE COMPANY

Throughout summer (9 June – 29 August) the Stamford Shakespeare Company presents an annual season of plays. Described by The Sunday Times as “One of the finest things to do this summer” and The Stage as “One of England’s premier alfresco theatre venues” it really is an experience not to be missed. This summer the Company are proud to present four fantastic plays:

William Shakespeare’s immortal tale of star-crossed lovers, *Romeo and Juliet*, and his most stylish comedy, *Love’s Labour’s Lost*; Oscar Wilde’s much loved masterpiece, *The Importance of Being Earnest*, widely considered one of the funniest plays in the English language; and the first production from Toilethorpe Youth Drama’s new ‘Theatre Makers’ programme – an exhilarating version of William Golding’s modern classic, *Lord of the Flies*.



#### HECKINGTON WINDMILL

This unique 8 Sailed Heckington Windmill is set in the heart of Lincolnshire. If you are travelling by car, it’s just off the A17 near Sleaford, next to Heckington Railway Station, so you can also catch the train to visit the windmill and leave the car at home.

Having recently undergone full refurbishment, there is plenty to see including the superb Visitor Centre with interactive exhibits, the Mill Shop selling local produce, gifts and souvenirs, and the Miller’s House Tea Room, with refreshments ranging from light lunches to fabulous home-made cakes. There is also the 8 Sail Brewery which is open for sales and sampling.

And not forgetting the fabulous windmill itself – take time to explore all five floors of the windmill and discover how flour is made. The sail mechanism will be undergoing repair in 2020 but when the milling team are on site, there is an opportunity to witness milling in action, with millstones driven by a Ruston oil engine, which produces a plentiful supply of wholemeal flour. You can buy the flour in the Mill Shop and it’s also used in the bakehouse to produce the cakes sold in the Tea Rooms. A fantastic day out with something for everyone to enjoy.

The theatre is situated in the grounds of historic Toilethorpe Hall, just two miles from Stamford, where last summer over 32,000 people experienced the magic of a visit to this unique venue. Enjoy a picnic in the glorious grounds, then take your seat, protected from summer showers, and see a stage like no other.

Box office (01780) 756133.

[www.stamfordshakespeare.co.uk](http://www.stamfordshakespeare.co.uk)





Linking the market town of Spalding to  
Springfields Outlet Shopping & Festival Gardens

*A lovely leisurely trip along the river  
with informative commentary*

Operating daily 4th April-27th September



Self-drive boat hire



Half or full day hire • Parties • Picnics • Days out  
All occasions considered

Ring or email Anthony to arrange your special trip

07740 664017 / 01406 380532

discoverspalding@btconnect.com

[www.spaldingwatertaxi.co.uk](http://www.spaldingwatertaxi.co.uk)



**Come and see** The World's Largest  
Collection of  
**HISTORIC TROLLEYBUSES**  
- and ride on some of them !



Plenty of **FREE** Parking

**OPEN SELECTED WEEKENDS**

**Easter to mid-November (10.30am - 4.30pm)**

**with a full programme of events**

Visit [www.sandtoft.org](http://www.sandtoft.org) for all the details

- Trolleybus Rides
- Working replica of pioneer 1911 trolleybus
- **TOY MUSEUM**
- Vintage Motorbus Tour of Local Area
- 1950s Shop Window Displays & Pre-fab "Home" Exhibition
- Period Cycle Shop
- Gardens & Nature Trail
- 5-Rated Café
- Picnic Areas & Play Areas



**We are at** **Belton Road Sandtoft**  
**North Lincolnshire**  
**DN8 5SX**

Registered Charity No.514382



**SKYDIVE**  
HIBALDSTOW

**GIFT  
VOUCHERS  
ON SALE**  
**STARTING AT £50**



[skydiving.co.uk](http://skydiving.co.uk)

Tel. 01652 648902

[info@skydiving.co.uk](mailto:info@skydiving.co.uk)

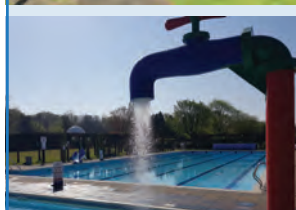






*Come and play or  
come and stay!*

- Heated swimming pools (water 29°C) open 4th April
- Gardens & play park
- Special events
- Camping and caravan site
- Online booking option



*For all the family-  
and the dog!*

Phone: 01526 353478  
[www.jubileeparkwoodhallspa.co.uk](http://www.jubileeparkwoodhallspa.co.uk)

## AVRO LANCASTER & BOMBER COMMAND MUSEUM

SET ON A WW2 AIRFIELD THIS IS THE LARGEST BOMBER  
COMMAND MUSEUM IN THE WORLD!!



## LINCOLNSHIRE AVIATION HERITAGE CENTRE

East Kirkby Airfield, East Kirkby, Nr Spilsby Lincolnshire PE23 4DE



Tel: 01790 763207

[www.lincsaviation.co.uk](http://www.lincsaviation.co.uk)

**SSC** Stamford  
Shakespeare  
Company

Romeo and Juliet  
Love's Labour's Lost  
The Importance of  
Being Earnest  
TYD Theatre Makers present  
Lord of the Flies

TOLETHORPE HALL

9 June – 29 August 2020



Last summer over 32,000 people experienced the magic of an evening at Tolethorpe Hall. As the sun slowly sets, enjoy a picnic in the beautiful grounds, then take your seat, protected from summer showers, and see a stage like no other.

*"One of the finest things to do this summer"*  
The Sunday Times

*"One of England's premier alfresco theatre venues"*  
The Stage

For 10% off ticket price use code **TOLEDISCLINC**

Box Office: 01780 756133  
[www.stamfordshakespeare.co.uk](http://www.stamfordshakespeare.co.uk)





**DODDINGTON HALL & GARDENS**  
– PHOTO BY CHRIS SNOWDEN

### DODDINGTON HALL & GARDENS

Begun in 1595 by Robert Smythson, one of England's foremost Elizabethan Architects, Doddington Hall was completed in 1600 and has never been sold or cleared out since. An example of a fine late Elizabethan Mansion, it is still a lived-in and much loved family home, alive with history and interest.

Originally built for Thomas Tailor, the registrar to the Bishop of Lincoln, Doddington's mellow brick exterior with its walled courtyards has barely changed. However, in 1749, the Hall was inherited by John Delaval of Seaton Delaval in Northumberland and he carried out an extensive internal re-decoration, incorporating the light and elegant Georgian style still seen today. In 1830 Colonel George Jarvis inherited the house from Sarah Gunman, heiress to the property, and the present owners are direct descendants of his.

Over 400 years of unbroken family occupation has resulted in fascinating collections of furniture, weaponry, paintings, ceramics, textiles, household objects, porcelain and a wealth of amusing stories all to be found in and around Doddington Hall. A visit to Doddington offers a unique insight into family life through the ages and

the challenges of looking after such an estate in the 21st century.

Since 2006 Doddington has been the much-loved family home of Claire and James Birch. They continued Claire's parents' work in devoting themselves to the upkeep, repair and progression of the Doddington Estate including: the development of the Farm Shop, Bike Shop, Café, Restaurant, Coffee Shop, Home Store, Farrow & Ball, Country Clothing Store, Bauble Barn, Christmas Tree Sales, Weddings and Events businesses; increasing public access; organising concerts and exhibitions and the development of various

accommodation across the estate. All proceeds go towards the upkeep and conservation of the Hall and Gardens and there is always something new to see and do on the estate whether that is inside the Hall, in the five acres of gardens, one of many events, or on one of the estate walks.

Don't miss the popular biennial Sculpture Exhibition with hundreds of sculptures from the UK and abroad displayed throughout the gardens and in the Stable Yard Galleries. Open daily 25 July – 6 Sept 2020, garden admission applies.

[www.doddingtonhall.com](http://www.doddingtonhall.com)



**DODDINGTON WEST GARDEN**



EDEN HALL



### DISCOVER LINCOLNSHIRE

Switch off, slow down and de-stress at Eden Hall Day Spa. This award-winning spa retreat in Nottinghamshire is an oasis of tranquillity and calm for those looking to experience the luxury of time.

Relax in the rose-infused steam room, take a cheeky snooze in the slumber lounge or enjoy a stressbusting massage. Spa packages have been built to suit all paces so you can be sure to find an Eden experience that's perfect for you.

There's also a broad range of classes in the state-of-the art gym and exercise

studio, from high-impact cardio to soothing meditation, and fitness experts are on hand every step of the way.

Beyond the spa, Eden Hall believes good nutrition is an essential part of the wellness journey, and delicious lunches and added indulgences perfectly round out any spa day.

Finally, don't miss the shop which features a carefully curated selection of skincare, unique homeware, beautiful jewellery, seasonal gifts and souvenirs.

Eden Hall Day Spa has a longstanding reputation as one of the UK's foremost day spas and was recently awarded Day Spa of

the Year at the 2019 Professional Beauty National Awards.

For full details visit [baronseden.com/eden-hall](https://baronseden.com/eden-hall) or call 01636 525555.

### BOSTON GUILDHALL

Built in the 1390s by the Guild of St Mary, this beautiful medieval building is today the town museum and available for private hire as a venue for wedding ceremonies and for events such as celebrations, conferences, meetings and talks.

A new exhibition, 'Boston: The Pilgrims and the Thread to America' expands our understanding of the Pilgrim story in Boston and shares how the town's connections had a profound influence on the foundation of the United States of America.

Boston until now has been thought of as the port and market town where, in 1607, a group of separatists with no connections to the town dramatically attempted to escape, only to be betrayed and arrested. However, a very different story is now being explored, a complex and compelling tale of intrigue and influence, which enhances Boston's importance in both the wider beginnings of the Pilgrims as well as the foundation and administration of Boston, Massachusetts in 1630.

Stand in the Court Room, walk through



BOSTON GUILDHALL



BOSTON GUILDHALL





# ALTiTUDE 44

SKEGNESS HIGHWIRE



**BOOK YOUR ADVENTURE NOW!**

**altitude44.co.uk**

Grand Parade, Skegness, PE25 2UG  
01507 681891 | [info@altitude44.co.uk](mailto:info@altitude44.co.uk)

Altitude44 is operated by Magna Vitae Trust for Leisure & Culture. Magna Vitae is a Registered Charity.  
Charity Number 1160156. A Partner to East Lindsey District Council.





## Visit Stonebow and Guildhall

The Stonebow is situated on the site of the southern gateway to Roman Lincoln. It is a gateway that has stood for over 1800 years although the present building was not completed until 1520.

The Guildhall sits proudly above the Stonebow and is the official home of the Mayor. Tours are available of this interesting historic building and includes the main Council Chamber where Lincoln's Council still meet, and most importantly the old debtors prison which now holds an impressive range of civic insignia, including the King Richard II sword and many Mayoral and City artefacts.



CITY OF  
**Lincoln**  
COUNCIL

[www.lincoln.gov.uk](http://www.lincoln.gov.uk)

For more information about the open days or to make a private appointment / pre-book tour please contact:  
Kate Fenn, Civic Manager (01522) 873303, Email [civic@lincoln.gov.uk](mailto:civic@lincoln.gov.uk)  
Tourist Information Services on (01522) 873800, Email [tourism@lincoln.gov.uk](mailto:tourism@lincoln.gov.uk)

## A fun day out for the whole family



- Indoor Play Barn
- Outdoor play areas
- Meet the animals
- Take a goat for a walk
- Tractor & trailer rides
- Keith's Krazy Karts
- Farmyard crazy golf
- Woodland walk
- Heritage Shed
- Select Lincolnshire Tearoom of the Year
- Gift Shop



**Rural Business  
Awards Best Midlands  
Rural Tourism Business  
and Best Diversification  
Project 2019.**

**Birthday parties  
School trips welcome**

**Tel: 01652 678822**  
South Kelsey, Lincs LN7 6PR

The fun filled farming experience

For opening hours visit: [www.hallfarmpark.co.uk](http://www.hallfarmpark.co.uk)

## Heckington Windmill

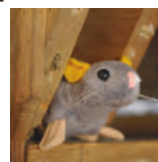
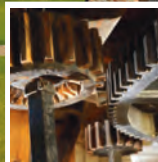


- 8 Sailed Windmill
- Visitor Centre
- Mill Shop
- Tea Rooms
- Brewery

Open Friday, Saturday & Sunday, and extra days in the Summer

See Website for full more information:  
[www.heckingtonwindmill.org.uk](http://www.heckingtonwindmill.org.uk)

Heckington, Near Sleaford, Lincolnshire



## STOURTON ESTATES

Est. 1926

Explore what's on offer at this beautiful estate with red deer safaris, special events, open days and unique wedding/private party venue hire opportunities.

Based off the A158 between Wragby and Horncastle.



[stourtonestates.co.uk](http://stourtonestates.co.uk) • 01507 578236



**Wilderspin**  
National School



Rekindle childhood memories and discover Barton's part in the story of the Infant School movement in Victorian Britain.

Explore the unique historic Schoolroom and Playground where educational pioneer Samuel Wilderspin created his Model Infant School in 1845.

Children can touch, explore and discover. The whole museum is wheelchair accessible.

**Free admission:**

Thurs – Sun, 10am – 4pm, December – February, 11am – 3pm

School visits and group tours available daily.

Queen Street, Barton upon Humber, North Lincs DN18 5QP



**Tel. 01652 635172**

[enquiries@wilderspinschool.org.uk](mailto:enquiries@wilderspinschool.org.uk)

[www.wilderspinschool.org.uk](http://www.wilderspinschool.org.uk) • [facebook@wilderspinmuseum](https://www.facebook.com/wilderspinmuseum)

**Be**  
at Eden Hall



— Swim, steam, relax  
and be pampered.

Make time for a day which is all about you.

For more information visit our website,  
[baronseden.com/eden-hall](http://baronseden.com/eden-hall)  
or give us a call on 01636 525555





WOODHALL SPA'S JUBILEE PARK

the Council Chamber and step into the Cells. Follow in their footsteps...

Contact us for more information  
[guildhall@boston.gov.uk](mailto:guildhall@boston.gov.uk) 01205 365954

Our normal opening hours are  
 Wednesday, Thursday, Friday and Saturday  
 10:30am – 3:30pm, last admission 3pm

### FAMILY FRIENDLY FUN IN THE HEART OF LINCOLNSHIRE

Woodhall Spa's Jubilee Park is at the heart of this thriving village. It offers sport, leisure and fitness facilities for all the family in a beautiful garden setting just a short stroll from the woods, walks, shops and restaurants that make the spa a popular destination for all ages.

The heated open air swimming pool and paddling pool, maintained at a consistent 29°C, are open this year from 4th April to mid September. The busy programme begins most days with an adult-only swim from 6:30-9am and weekly timetable includes slots for swimming lessons, aquacise, lane swimming and general swimming for all comers with longer hours in high season. On Tuesdays seniors can swim for half price and carers for the disabled can go in for free. In hot weather tickets can also be booked online in advance to avoid disappointment.

The recently refurbished children's play park is open all year and in the season there's a café for light refreshments.

Throughout the spring and summer the busy seasonal programme of events in the park includes open-air evening cinema showing iconic films in partnership with the Kinema in the

Woods, dog shows and plant fairs and an elves and fairies door hunt for younger children. The park is also the hub for the village's famous 1940s weekend, a popular 10k run and an annual triathlon. The local cricket, tennis, bowls and croquet clubs have their homes here.

Full details and timetables appear on the Jubilee Park website.

### AN OASIS OF CALM AT PURE LAND MEDITATION CENTRE AND JAPANESE GARDEN

Featured on Alan Titmarsh's ITV's Britain's Best Garden, Pure Land is a little oasis of calm and can be found in the small village of North Clifton, near Newark and very close to the border of Lincolnshire. Pure Land was created by the owner Maitreya, who is originally from Japan, and features

a repertoire of traditional Japanese garden elements such as water, carp, bridges, moss, bamboo, evergreens, maples, cherry, stone lanterns, and blended with a dash of English plants. A case of East and West in radiant harmony. Maitreya's main aim in creating the garden was to provide a peaceful, beautiful area which guests and visitors to the centre can enjoy, an experience of relaxation and peace. There is also a unique crystal garden built by Maitreya which is his expression of the beauty of nature with mountains, a river, fields, and an ocean created by using countless crystals, gems and precious stones. You can also come and enjoy some meditation and relaxation at Pure Land Japanese Garden with regular Monthly Meetings held all year round. For more details about Pure Land Japanese Garden, activities and events, visit [www.buddhamaitreya.co.uk](http://www.buddhamaitreya.co.uk) or 01777 228567.

### 'DROP IN' OVER LINCOLNSHIRE

North Lincolnshire's best kept secret. Skydive Hibaldstow, one of the UK's largest and best known dropzones, operates out of the Hibaldstow airfield near Brigg. What started as a small dropzone over 25 years ago has turned into a family of dropzones with sister locations, Skydive Spain and Skydive Algarve operating out of Spain and Portugal. Skydive Hibaldstow are the experts in tandem skydiving.

The dropzone offers first time parachuting experiences, which are a great way to experience the thrill of a freefall without any previous experience. Courses are also available for those who want to become qualified skydivers.

In addition to skydiving, enjoy a warm meal and a cold drink!



PURE LAND





Skydive Hibaldstow facilities include a full restaurant and bar, serving warm meals and hosts events and special occasions. The dropzone facilities are open to the public for dining and watching the spectacular parachutes landing.

Skydive Hibaldstow is located at Hibaldstow Airfield, Hibaldstow (near Brigg), North Lincolnshire DN20 9NN. They can be reached by phone at (0)113 250 5600. Visit [skydiving.co.uk](http://skydiving.co.uk) or follow them on [www.facebook.com/skydivehibaldstow](http://www.facebook.com/skydivehibaldstow)

#### WARTIME STORIES FROM LINCOLNSHIRE AVIATION HERITAGE CENTRE

"If one person goes away with a better knowledge of Bomber Command, their losses and what they gave for our country, we are one step closer to repaying our debt to them."

The Lincolnshire Aviation Heritage Centre is a family run museum and was set up over 20 years ago. It is now widely seen as a living memorial to the 55,500 men of Bomber Command who lost their lives during WW2.

It holds one of the rarest aircraft, an Avro Lancaster Bomber, in its collection along with many wartime vehicles including a Ford WOT1 Crew Bus, the only one of its kind known in existence.

The average age of aircrew, each man a volunteer, was 22 and not even 1 in 4 completed their first tour of 30 operations, most definitely a debt that we cannot repay but also a debt that should not be forgotten.

Our Museum is built up entirely around RAF Bomber Command but the exhibits and displays span many areas such as The Home Front and Escape and Evasion giving you a wide perspective on wartime Britain and the trials and tribulation of the Second World War.

[www.lincsaviation.co.uk](http://www.lincsaviation.co.uk)



Open 10am - 5pm  
7 days a week  
with two coffee shops  
and ample parking.

HEMSWELL  
**ANTIQUE**  
CENTRES

Shop  
Online  
24/7

Visit Europe's Largest Antique Centres  
**TODAY. Over 400 dealers in our  
four large buildings or check out  
our extensive selection online.**

Mirrors ❖ Militaria ❖ Lighting ❖ Silver  
Linen & Lace ❖ Period Furniture  
Decorative Antiques ❖ Gift Ideas  
Ceramics ❖ Jewellery  
Brass & Copper  
Clocks & Barometers  
Vintage & Retro  
Rugs & Textiles  
Paintings & Prints  
Pine Furniture  
Collectables  
Books

10 miles north of Lincoln on the A631. DN21 5TJ  
T: 01427 668389 [f](https://www.facebook.com/hemswellantiques) [i](https://www.instagram.com/hemswellantiques) [t](https://www.twitter.com/hemswellantiques) Follow Us Today!  
E: [enquiries@hemswell-antiques.com](mailto:enquiries@hemswell-antiques.com)  
**[www.hemswell-antiques.com](http://www.hemswell-antiques.com)**



# PINK & PIG FARM

family food & fun



**FREE adult  
with a full  
paying child**

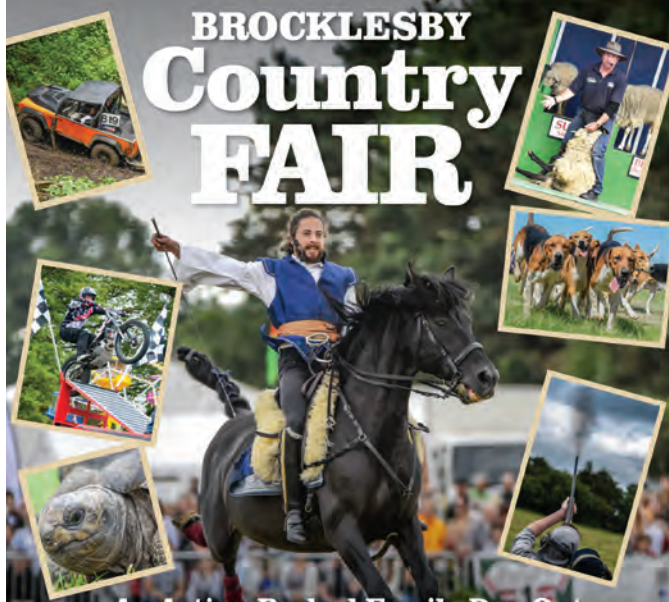
with this voucher (1 per family)  
Expires 30 Nov 20  
(excludes events)

Holme  
Scunthorpe  
DN16 3RE

[www.pinkpigfarm.co.uk](http://www.pinkpigfarm.co.uk)

Sunday 21st June 2020

## BROCKLESBY Country FAIR



**An Action Packed Family Day Out**

- TV's Atkinson Action Horses • The Sheep Show • Falconry
  - Terrier Racing • Man against Machine-Xtreme Stunt Team
- FREE Parking / Admission Adults £12 / Under 14's FREE



**BROCKLESBY ESTATE**

Brocklesby Park, Grimsby, North East Lincolnshire DN41 8PN

[www.brocklesby.co.uk/countryfair](http://www.brocklesby.co.uk/countryfair)

**NATIONAL  
CIVIL WAR  
CENTRE**  
NEWARK MUSEUM



**IN A WORLD  
TURNED UPSIDE DOWN  
WHICH SIDE WILL  
YOU CHOOSE?**

NATIONAL CIVIL WAR CENTRE, APPLETONGATE, NEWARK, NOTTS, NG24 1JY



**DISCOVER OUR BRAND NEW EXHIBITIONS  
THE WORLD TURNED UPSIDE DOWN**

[WWW.NATIONALCIVILWARCENTRE.COM](http://WWW.NATIONALCIVILWARCENTRE.COM)

01636 655765



# Sir Joseph Banks Centre

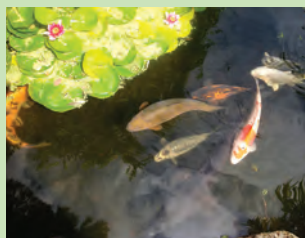
HOME TO THE HORNCASTLE TOURIST INFORMATION CENTRE

**A UNIQUE GIFT SHOP WITH SO MUCH MORE...**

**We have great gifts for everyone together with a tribute garden and Joseph Banks Room.**



7-13 Bridge Street, Horncastle LN9 5HZ 01507 526065   
Open Monday - Saturday 10.00am to 4.00pm



## PURE LAND JAPANESE GARDEN & MEDITATION CENTRE

Pure Land has won numerous awards and has featured in;

*The AA book 'The Inspirational Gardens'*  
*'The Good Garden Guide'*

*'The Most Amazing Gardens to Visit in Britain'*  
*by Readers Digest*

*Featured on Alan Titchmarsh's ITV*  
*'Best British Garden'*

The gardens feature the world's first crystal garden. Special events throughout the year include magical lantern lit garden evenings in August and September and Meditation and Relaxation days.

Gardens open from the last weekend in March to the last weekend in October. Meditation centre open all year round.


### Nature's Heart Concert

Sunday 19th July 2020

*An afternoon of soul-evoking songs, haiku poetry and meditation - a day of spiritual awakening!*

For more information

[www.buddhamaitreya.co.uk](http://www.buddhamaitreya.co.uk)

Pure Land Japanese Gardens, North Clifton,  
Nr Newark, Nottinghamshire, NG23 7AT.  
T: 01777 228567 E: ftaquality@yahoo.co.uk  
 buddhamaitreya

## stamford arts centre

Theatre | Music | Gallery  
Cinema | Poetry | Talks  
Workshops | Comedy  
Dance | Cellar Bar | Cafe



[www.stamfordartscentre.com](http://www.stamfordartscentre.com)  
Box Office 01780 763203







# Discover FESTIVALS

To suit all tastes

## FAMILY FRIENDLY Festivals

*Lincolnshire knows how to celebrate culture, the great outdoors and its heritage. Many of our county's themed festivals make perfect mini-breaks and holidays throughout the year to create memories with family and friends.*

### **Lincolnshire Wolds Walking Festival** **Dates: 16th to 31st May 2020**

Walks for all ages and abilities across this area of outstanding natural beauty. Take it easy at under 5 miles; moderate exertion at 5-10 miles or be more strenuous with a 10-mile-plus stretch.  
[www.woldswalkingfestival.co.uk](http://www.woldswalkingfestival.co.uk)

### **Call of the Wild Festival** **Dates: 29th to 31st May 2020**

Thunderous rock in a countryside setting



LINCOLNSHIRE WOLDS WALKING FESTIVAL





LOST VILLAGE

at the second Call of the Wild Festival, Lincolnshire Showground, Grange de Lings

[www.callofthewildfestival.com](http://www.callofthewildfestival.com)

### Lincoln International Chamber Music Festival

**Dates: 15th to 19th July 2020**

Innovative events in wonderful venues across Lincolnshire performed by great artists. A full programme is released later in the year.

[www.licmf.moonfruit.com](http://www.licmf.moonfruit.com)

### Woodhall Spa 40's Festival

**Dates: 18th and 19th July 2020**

This popular event will return to the village to celebrate life on the homefront.

[www.woodhall-spa-40s-festival.com](http://www.woodhall-spa-40s-festival.com)



WOODHALL SPA 40'S FESTIVAL

### ASYLUM STEAMPUNK FESTIVAL



### Beyond the Woods

**Dates: 9th to 10th August 2020**

An intimate gathering of friends, music lovers and party-goers at Stourton Estates, Baumber.

[www.beyondthewoods.co.uk](http://www.beyondthewoods.co.uk)

### Lost Village Festival

**Dates: 27th to 31st August 2020**

An immersive festival experience in an abandoned woodland village just south of Lincoln. More than a music festival – hot tubs and relaxation at a water's edge, global street food, great comedy line-ups and of course dancing.

[www.lostvillagefestival.com](http://www.lostvillagefestival.com)

### Asylum Steampunk Festival

**Dates: 28th to 31st August 2020**

This Lincoln centred festival is the largest and longest running Steampunk festival held within 'the solar system' attracting participants from around the globe. Wonderfully inspired costumes and such a friendly group.

[www.asylumsteampunk.co.uk](http://www.asylumsteampunk.co.uk)

### SO Festival

**Dates: 4th to 6th September 2020**

Incredible programme of outdoor artists and theatre brought to the Lincolnshire coastal strip.

[www.sofestival.org](http://www.sofestival.org)

### Lincoln Book Festival

**Dates: 21st to 26th September 2020**

Authors, readings, lectures and tours staged within various venues across the city. See the website for this year's theme

and programme.

[www.lincolnbookfestival.org](http://www.lincolnbookfestival.org)

### Gravity Fields Festival

**Dates: 23rd to 28th September 2020**

Gravity Fields is a festival of science, arts, heritage, music, drama, and outdoor spectacular, in and around Grantham to celebrate Sir Isaac Newton's legacy.

[www.gravityfields.co.uk](http://www.gravityfields.co.uk)

### Lincoln Sausage Festival

**Dates: 11th October 2020**

Sizzling Lincolnshire bangers from a range of local producers entice plenty of visitors to Lincoln Castle and Castle Hill for this annual foodie celebration of all things sausage.

**Facebook: Lincoln Sausage Festival**

### Spalding Pumpkin Festival

**Dates: 9th October 2020**

An autumn celebration of horticulture and harvest with extreme pumpkin carving, Farmers' Market and entertainment.

[www.sholland.gov.uk/pumpkinfestival](http://www.sholland.gov.uk/pumpkinfestival)

### Frequency Festival of Digital Culture

**Dates: 22nd to 25th October 2020**

This festival integrates art into Lincoln's historic cityscape in the form of installations, projections, site specific work, talks and live performances.

[www.frequency.org.uk](http://www.frequency.org.uk)

### 2Q Festival 2020

**Dates: 7th November 2020**

Lincoln's metropolitan live music festival. 10 venues – 90 acts.



# SPRINGFIELDS



OUTLET SHOPPING & LEISURE

## ENJOY A DAY OUT AT SPRINGFIELDS OUTLET SHOPPING AND LEISURE



**Up to 50% off RRP** at the leading  
shopping and leisure destination  
in the East of England

[springfieldsoutlet.co.uk](http://springfieldsoutlet.co.uk)   

Springfields Outlet Shopping & Leisure, Camelgate, Spalding, Lincolnshire, PE12 6EU  
Phone: 01775 760909 Email: [inquiries@springfieldsoutlet.co.uk](mailto:inquiries@springfieldsoutlet.co.uk)

**OV**  
*joules* **M&S**  
OUTLET CREW  
**next** **RADLEY**  
OUTLET LONDON THE





OVER 50 STORES

 NEW CLOTHING COMPANY
 













**EIGHT**  
RESTAURANTS



HOME TO THE **LARGEST**  
JCB YOUNG DRIVERS  
ZONE IN THE UK



# Win a midweek short break in Lincolnshire

Kindly sponsored by Elms Farm Cottages, Hubberts Bridge, we are offering one lucky entrant the opportunity to win a midweek short break at this award winning cottage complex in the Lincolnshire Countryside.

With nine cottages in converted barns and stables, Elms Farm are fully equipped and furnished to a high standard with level access throughout. Just two miles from the historic market town of Boston and ideally located to explore the Lincolnshire Fens, Wolds and Coast as well as the city of Lincoln, this is the perfect place for a peaceful break.

Elms Farm is within easy walking distance of the local pub for good food, and with riverside walks, excellent river fishing, Frampton Marsh Nature Reserve & Boston West Golf Course located nearby, you won't need anything else to help you relax and unwind.

To enter simply send your name and address on a postcard to Discover Lincolnshire 2020 competition, c/o County Life, County House, 9 Checkpoint Court, Sadler Road, Lincoln LN6 3PW or send us your details via our Facebook page, Discover Lincolnshire

Competition closes  
31st December 2020

[www.discoverlincs.co.uk](http://www.discoverlincs.co.uk)

T: 01522 692542

[www.elmsfarmcottages.co.uk](http://www.elmsfarmcottages.co.uk)

T: 01205 290840



## CHOOSE WHERE to stay

To help you plan your visit here is a guide to the quality assessment ratings and awards achieved by our accommodation providers.

### ACCOMMODATION SYMBOLS

- Children welcome
- Childrens play area
- Cot(s) available
- Disabled toilets
- Garden for guests use
- Ground floor accommodation
- Level access
- Licensed to sell alcohol
- Online bookings
- Parking facilities
- Passenger lift/Stair Lift
- Pets welcome (prior arrangement)
- Swimming pool
- Within 2 miles of the Viking Way
- Within 5 miles of the Hull to Harwich cycle route
- WIFI
- Evening meals available
- Guests lounge
- Restaurant on site
- Special dietary needs catered for
- Tea/Coffee making facilities
- Dishwasher
- Freezer
- Fridge
- Linen hire available
- Linen provided free of charge
- Microwave
- Washing machine available
- Chemical toilet disposal facilities
- Hot tub
- Electric hook-up available
- Food shop on site/mobile food shop
- Gas cylinder exchange or refill
- Shower on site
- Toilets on site

### RATINGS MADE EASY

- ★ Simple, practical, no frills
- ★★ Well presented and well run
- ★★★ Good level of quality and comfort
- ★★★★ Excellent standard throughout
- ★★★★★ Exceptional with a degree of luxury

Information and prices in this guide are correct at the time of going to press, but may change. Readers are therefore strongly advised to check all prices at the time of booking. Unless otherwise stated, all serviced accommodation prices are per room per night, all self catering and static caravan prices are per week and touring caravan prices are per night.





Hotel



Guest House, B&amp;B, Inn



Self Catering



Camping &amp; Caravanning



# CITY OF LINCOLN ACCOMMODATION

## 46 Mill Road

Self Catering



46 Mill Road is a clean and bright semi-detached townhouse offering three bedrooms and two bathrooms. There is a comfortable lounge and a fully equipped dining kitchen plus a lovely patio/garden and private parking. Within walking distance of the Cathedral Quarter this self catering accommodation is a true home from home.

🏠: 46 Mill Road, Lincoln LN1 3JJ  
☎: 07507 200148 ✉: info@46millroadlincoln.co.uk  
🌐: www.46millroadlincoln.co.uk  
💰: Prices: From £100 per night, sleeps up to 6  
🚗 🚶 🚲 🚿 🚰 🚰 🚰 🚰 🚰 🚰

## Admiral Guest House

Guest Accommodation



Andrew and Nikki look forward to offering you a warm welcome and friendly stay. The Admiral Guest House is an attractive 100 year old property quietly positioned off the main A57 road into Lincoln. We offer a full English Breakfast. Within walking distance of Lincoln University, Brayford Pool and city centre. Credit Card payment accepted.

🏠: 16 Nelson Street, Lincoln LN1 1PJ  
☎: 01522 544467 📞: 07950 245443  
🌐: www.admiralguesthouseinlincoln.co.uk  
✉: nicola.major1@ntlworld.com 💰: Prices: From Single £38, Twin £60, Double £60, Family £80  
🚗 🚶 🚲 🚿 🚰 🚰 🚰 🚰 🚰 🚰

## Holiday Inn Lincoln

Hotel



Situated on the picturesque Brayford Wharf, Holiday Inn Lincoln is the ideal location for exploring the beautiful, historic city. Relax in our Brayford View Bar & Restaurant or watch the boats sail by in our waterfront Starbucks store. Most of our modern style bedrooms have views of the marina or Lincoln Cathedral.

🏠: Brayford Wharf North, Lincoln LN1 1YW  
☎: 01522 544244  
✉: reservations.hilincn@kewgreen.co.uk  
🌐: www.hilincn.co.uk 💰: Prices: £85-£200  
🚗 🚶 🚲 🚿 🚰 🚰 🚰 🚰 🚰 🚰

## Lincoln Holiday Homes

Self Catering



Welcome to Lincoln Holiday Homes at Fen Farm, Lincoln. Set in 800 acres on the very edge of the city. Perfect for family holidays, relaxing short breaks or business accommodation. Any length of stay is possible from one night to one month for one to twenty guests. All our holiday homes have their own private hot tubs, steam shower/baths and under floor heating.

🏠: Fen Farm, Skellingthorpe Road, Lincoln LN6 0SB  
☎: 07774 112990 ✉: info@lincolnholidayhomes.co.uk  
🌐: www.lincolnholidayhomes.co.uk & www.lincolnholidays.co.uk 💰: Prices: Short breaks £295-£740  
🚗 🚶 🚲 🚿 🚰 🚰 🚰 🚰 🚰 🚰

## St Clements Old Rectory

Self Catering

★★★



Ideally located, well equipped, our cosy apartments within a former Victorian Rectory have loads of character and charm. Cathedral views, quiet gardens with mature trees, you are just a short walk from historic 'Uphill Lincoln'. Everything is provided for a relaxed comfortable stay. Ample off-street car parking.

🏠: Langworthgate, Lincoln LN2 4AD  
☎: 01522 538087 ✉: stclementsor@outlook.com  
🌐: www.stayatstclements.co.uk  
💰: Prices: From £230 per week  
🚗 🚶 🚲 🚿 🚰 🚰 🚰 🚰 🚰 🚰

## The Swan Guest House

Guest Accommodation



Based at the heart of the university campus with great views over the Brayford waterfront, The Swan is an award-winning pub that offers locally produced food and a wide range of craft and cask ales. Its relaxed and friendly atmosphere makes it the perfect place to stay during your visit to the city.

Above the pub, two double rooms and a family room with shared facilities are available, or hire the whole three-bedroom guest house for a larger group. A separate en suite double room is also available. All rooms provide newly decorated, modern facilities to make your stay as comfortable as possible.

Full details of the rooms can be found on the website, where you can see availability, prices and book instantly.

🏠: Brayford Pool, Lincoln LN1 1RD  
☎: 01522 837611  
🌐: www.lincolnsu.com/swanairbnb  
💰: Prices: Double room from £30, family room from £40, full guest house from £100  
🚗 🚶 🚲 🚿 🚰 🚰 🚰 🚰 🚰 🚰



# COUNTRYSIDE NORTH ACCOMMODATION

## Ashlin Farm Barns

Caravan &amp; Camping



5 luxurious and spacious holiday barns, each comfortably accommodating 10 people in 5 en-suite bedrooms. Each barn has a log burning stove, barbecue and huge hot tub in private gardens overlooking Lincolnshire countryside, just 5 miles from the bustling Cathedral city of Lincoln.

🏠: Ashlin Farm, Ashing Lane, Dunholme, Lincoln LN2 3BY  
☎: 01673 863392  
☎: 07767 667425 ✉: info@ashlinfarmbarns.co.uk  
🌐: www.ashlinfarmbarns.co.uk 💰: Prices: From £850  
🚗 🚶 🚲 🚿 🚰 🚰 🚰 🚰 🚰 🚰



## Black Swan Guest House

Guest Accommodation

★★★★



Rurally located just a 15-minute drive from Lincoln city centre, our Grade II listed house is well located for your visit to Lincoln and the surrounding area. We have 9 en-suite rooms, all of which have Freeview TV, WiFi and tea/coffee making facilities. We are pet friendly and have ample off-road parking.

📍: 21 High Street, Marton, Gainsborough DN21 5AH  
 ☎: 01427 718878  
 ✉: info@blackswanguuesthouse.co.uk  
 🌐: www.blackswanguuesthouse.co.uk  
 💰: Prices: From: Single £50, Double/Twin £72, Family £95  
 🚗 🐕 📺 📶 🍲 🛏 🚿 🚰 🚰

## Bridleway Luxury B&B

B&B

★★★★



Award-winning B&B only 3 miles from Lincoln; set in 2 acres beside a wood. Rated 9/10 by The Telegraph and featured in The Sunday Times 100 favourite British Hotels. Bridleway is a friendly B&B offering relaxed luxury with quirky decor. The 4 rooms are housed in a converted outbuilding; each having underfloor heating, wet rooms, fluffy towels and robes and Nespresso coffee machines. Breakfasts are cooked in the AGA using locally-sourced free range ingredients where possible, and are served in the conservatory. We have been awarded the Visit England Gold Award, Visit England Breakfast Award and Walkers and Cyclists Welcome Awards.

📍: Riseholme Gorse, Grange de Lings, Lincoln LN2 2LY  
 ☎: 01522 545693  
 ✉: bridlewaybandb@gmail.com  
 🌐: www.bridlewaybandb.co.uk  
 💰: Prices: From £83  
 🚗 🐕 📺 📶 🍲 🛏 🚿 🚰 🚰

## Dairy Barn

Self Catering

★★★★★



A 'Hidden Gem' for you to relax and enjoy. Award winning 5 star gold accommodation in a traditional village location north of Lincoln. This stunning 2 bedroom Grade II listed barn offers open plan luxury with traditional and contemporary features, creating a light, spacious holiday let. Enjoy a complimentary local produce hamper to enhance your stay.

📍: 33, The Green, Ingham, Lincoln, Lincs LN1 2XT  
 ☎: 07747 893465 ✉: a4jec@aol.com  
 🌐: www.dairybarningham.co.uk Prices: From £375 weekends, midweek and weekly stays available. Min 3 nights stay. Please contact for more details.  
 🚗 🐕 📺 📶 🍲 🛏 🚿 🚰 🚰



## Hope & Anchor

Guest Accommodation



Informal hospitality at its best. The beautiful 19th century pub is nestled in the heart of South Ferriby, located just five minutes from the mighty Humber Bridge. Offering panoramic, picturesque views from the restaurant and three of our rooms. The pub offers a combination of traditional seasonal cuisine and historic dishes, priding ourselves on using locally sourced ingredients. We are the perfect venue for cyclists, walkers and workers with our open fires and fabulous welcome. Our five comfortable and stylish en-suite bedrooms are in keeping with the warmth of the pub, one being pet friendly. Locally sourced guests ales, superb cocktails and a carefully selected wine list all contribute to the perfect place to unwind for locals and visitors alike.

📍: Sluice Road, South Ferriby, DN18 6JQ  
 ☎: 01652 635334  
 ✉: info@thehopeandanchpub.co.uk 🌐: www.thehopeandanchpub.co.uk  
 💰: Prices: £95-£115

🚗 🐕 📺 📶 🍲 🛏 🚿 🚰 🚰

## Corner Cottage



Delightful two bedroomed stone cottage with its own front garden and garage offering spacious, well equipped accommodation with free Wi-Fi. Four minutes walking distance to the centre of this award-winning village with shops, pubs which serve meals, Village Green and picturesque Beckside. Mid-week and Weekend bookings also available. Open All Year.

📍: 15 Crescent Close, Nettleham, Lincoln LN2 2SP  
 ☎: 01522 750819 ✉: 07786910627  
 ✉: susan@oldvic.net  
 🌐: www.oldvic.net Prices: £390-£525  
 🚗 🐕 📺 📶 🍲 🛏 🚿 🚰 🚰

## COAST ACCOMMODATION



## Croft House Cottages



The Bakehouse, a stunning contemporary styled barn conversion and Custard Cottage lie in the tranquil, leafy grounds of Croft House, situated in rural seclusion, yet only five miles from award winning sandy beaches, nature reserves and historic market towns, with a heated swimming pool. A perfect base to explore the beauty of the Wolds, Coast and Marshes. Please call for prices.

📍: Burgh Lane, Croft, Burgh Le Marsh, Nr Skegness, Lincolnshire, PE24 5AP  
 ☎: 07979 766340 ✉: info@croftcottagecottages.com  
 🌐: www.croftcottagecottages.com  
 🚗 🐕 📺 📶 🍲 🛏 🚿 🚰 🚰









# COUNTRYSIDE SOUTH ACCOMMODATION

**Drws Nesaf**

Self Catering  
★★★



Our warm, comfortable bungalow is within easy reach of Lincoln, the Wolds, Lincolnshire's aviation heritage and The Fens. Come and enjoy a quiet location overlooking an old windmill. You can park your car off-road. The bungalow is fully equipped and we provide all the bedding and towels. There is full gas fired central heating.

A short walk down the road and you are amongst the shops, post office, pharmacy, pubs and churches. A little further on and you will be at the railway station. The village is also on local bus routes.

We are a good base for visiting towns like Woodhall Spa, Sleaford and Newark. Locally there are nature reserves, identified walks and cycle routes. All the guides are in the bungalow.

We have been awarded the Visit England Gold Award following our last inspection and we are members of the Walkers and Cyclists welcome schemes.

🏠 84 Prince's Street, Metheringham LN4 3DE

☎ 01526 322558

✉ nj.jones60@tiscali.co.uk

💰 Prices: £265-£390 per week

🚗 🚲 🏠 🍽 🛎 📶

**Fulbeck Gardens**

Self Catering  
★★★★



Very clean Self Catering period cottage adjacent owners' vineyard in one of Lincolnshire's prettiest cliff villages. Sleeps 2-7 persons in 3 bedrooms plus cot. Relaxing Lounge, spacious separate dining room and well equipped dining kitchen, utility room plus a generous family bathroom. Free use of the hot tub and free Wifi. The enclosed garden has a range of garden furniture and BBQ and there is ample parking for several cars plus a secure cycle store. Complimentary hamper of local produce on arrival. A five minute stroll to the local pub, Craft Centre & Tea-rooms. Perfect for families and couples and on a direct route into the historic city of Lincoln and many of Lincolnshire's attractions. Visit England GOLD award winning 2014 to 2018/19.

🏠 North Heath Lane, Fulbeck, Lincolnshire NG32 3HH

☎ 01400 273989

✉ ownsworthsmail@gmail.com

🌐 www.fulbeckgardenscottage.com

💰 Prices: Weekly £495 to £860, all year round

🚗 🚲 🏠 🍽 🛎 📶

**Washingborough Hall**

Hotel



Award winning, independent, Country House Hotel on the outskirts of historic Lincoln. 20 individually decorated bedrooms including four posters and one suite, oozing style, charm and original Georgian features. Enjoy the best of Lincolnshire produce in the award winning two AA Rosette restaurant or enjoy afternoon tea in the Dining Room or outside on the terrace in the summer. Ample free on site parking.

🏠 Washingborough Hall, Church Hill, Washingborough, Lincoln LN4 1EH

☎ 01522 790340

🌐 www.washingboroughhall.com

💰 Prices: From £70.50

🚗 🚲 🏠 🍽 🛎 📶

**Jubilee Park**

Caravan & Camping



Jubilee Park camping and caravan site is located around a 5 minute walk from the centre of Woodhall Spa. Jubilee Park has a large heated outdoor swimming pool and paddling pools, open Easter weekend, as well as beautiful gardens, park games and a children's play park. The caravan and camping site has access to heated shower blocks with spacious showers, laundry and washing up facilities, charging points, hairdryers as well as a disabled shower room. We have a number of hardstanding pitches, electric hook-up pitches and camping pitches. The park has free wifi and prides itself on being family friendly, with noise restrictions between 10pm and 7am. Caravan and camping site open from 3rd April until 18th October 2020.

🏠 Stixwold Road, Woodhall Spa, Lincolnshire LN10 6QH

☎ 01526 353478

✉ caravan@jubileeparkwoodhallspa.co.uk 🌐 www.jpws.co.uk

💰 Prices: £11-£36 per night

🚗 🚲 🏠 🍽 🛎 📶









## Woodhall Country Park

Caravan & Camping

★★★★★ / ★★★★★



Woodhall Country Park is a five star holiday park set in a beautiful area of woodland in the heart of Lincolnshire. Our spacious pitches are set amongst the natural habitat, surrounded by trees and wildlife. We have 88 serviced hard standing caravan pitches, and 28 serviced grass pitches suitable for caravans or large tents. In addition, we have two specific camping areas. New in 2018, The Hideaway provides a contemporary twist to a glamping getaway, compact, yet fully equipped with a shower, toilet and kitchenette. We also have 12 camping pods, inclusive of a bed, kettle and electricity. All guests have access to spacious, heated washroom facilities with disabled and family rooms, a laundry, and food prep room with fridge, freezer and microwave. Woodhall Country Park is popular with couples and families, cyclists, walkers, anglers and dog owners. We are within walking distance of the Edwardian village of Woodhall Spa.

📍 Stixwold Road, Woodhall Spa, Lincolnshire LN10 6UJ

☎ 01526 353710

✉ info@woodhallcountrypark.co.uk

🌐 www.woodhallcountrypark.co.uk

💰 Prices: Tents from £19 per night, Caravans from £24 per night, Pods from £40 per night



## Woodhall Country Park

Guest Accommodation

★★★★★ / ★★★★★



Woodhall Country Park is a five star holiday park set in a beautiful area of woodland in the heart of Lincolnshire. Our 2018 Hoseasons Diamond Award winning lodges, are luxurious and contemporary with a choice of 2 or 3 bedrooms, sited around one of the three fishing lakes. The natural habitat of the park provides an abundance of walks and wildlife, making an ideal destination for a relaxing break or family getaway. After a day of exploring, unwind in the hot tub, on your private, covered verandah. Our lodges provide a home from home experience, furnished to the highest standard with a fully equipped kitchen, family bathroom, ensuite, spacious lounge/dining area and outside BBQ. Adjacent parking available. Woodhall Country Park is popular with couples and families, cyclists, walkers, anglers and dog owners. We are within walking distance of the Edwardian village of Woodhall Spa.

📍 Stixwold Road, Woodhall Spa, Lincolnshire LN10 6UJ

☎ 01526 353710

✉ info@woodhallcountrypark.co.uk

🌐 www.woodhallcountrypark.co.uk

💰 Prices: Please see website for details. 3, 4, 7 night breaks available.



## FENS ACCOMMODATION

### Carrington Court Holiday Cottages

Self Catering

★★★★



Barn conversion, two self-contained luxury properties with a home from home atmosphere set in tranquil rural setting. Original beams and features, equipped to high standard with en-suite master bedrooms and luxury bathrooms. Peaceful setting, panoramic views with nature pond and sun house with jetty decking picnic area and extensive gardens. Open all year. Brochure available. Virtual tour available on website.

Ideally situated only four miles north of the market town of Boston, which is steeped in history, and famous for its twice weekly market, magnificent Stump! (St Botolph's Church) and its strong links with the USA through its Pilgrim Father founders. A seaside trip to Skegness is a must at only twenty miles away and Woodhall Spa with its famous golf course is approximately fifteen miles away. WiFi available in both cottages.

📍 Frithville, Boston, Lincolnshire PE22 7HL

☎ 01205 750441 ☎ 07931 591980

✉ ste.sta.lun@tinyworld.co.uk 🌐 www.carringtoncourt.co.uk



### Crewyard Holiday Cottages

Self Catering

★★★★



Offering a comfortable home from home and open all year round, these three beautifully presented holiday cottages sleep two, three and four guests.

The cottages are fully equipped, have their own outdoor space with patio furniture and overlook a mature garden and lake. There's a games room on site with a full-size snooker table, a selection of books and comfortable seating area. Laundry facilities are available in a separate room.

They are ideally situated for visiting the local RSPB nature reserves and the Lincolnshire Wolds. Trips along the river are available from the nearby market town of Boston. This is a good base for those interested in past and present aviation, for Lincoln Cathedral, Lincolnshire wildlife park or the seaside town of Skegness. Open all year for weekly or short breaks.

📍 'Everards, Highgate, Leverton, Boston, Lincolnshire PE22 0AW

☎ 01205 871389 ☎ 07896 369043

✉ ash.gina31@gmail.com 🌐 www.crewyardholidaycottages.co.uk

💰 Prices: Weekly Rates: Moorhen Cottage £286-£545, Mallard Cottage £313-£625,

Curlew Cottage £367-£695







Hotel



Guest House, B&amp;B, Inn



Self Catering



Camping &amp; Caravanning

## Elms Farm Cottages



"Award Winning" Converted barns and stables. Nine holiday cottages set around a pretty courtyard garden. Two and three bedroom cottages all fitted and furnished to a high standard with modern kitchens, wood floors, leather sofas, wall mounted TVs/ DVDs. Four cottages have cosy wood burners, all cottages have level access, several have wet room showers suitable for wheelchair users. Over 18 acres of grass paddocks and wildflower meadows with mown walkways around two lakes for guests to enjoy. BBQ Lodge with indoor dining for 20 plus pizza oven. Elms Farm offers you the perfect place to relax and unwind in the beautiful Lincolnshire countryside with family and friends or a getaway for two. Well behaved pets welcome, village pub within walking distance. Open all year for weekly or short breaks. Hot tub with Oak Cottage.

📍: Hubberts Bridge, Boston, Lincolnshire PE20 3QP  
☎: 07887 652021 ✉: carol@elmsfarmcottages.co.uk  
🌐: www.elmsfarmcottages.co.uk  
💰: £395-£850



## Supreme Inns

Hotel  
★★★★★



24h Supreme Inns is situated in Bicker Bar near Boston. It has 55 large and well equipped bedrooms with en-suite facilities. All rooms have internet access, telephone points, flat screen television.

We have a modern, relaxing bar area, serving homemade bar meals all day, every day. Our award winning restaurant & bar can seat up to 80 guests and here you will find some of the tastiest food in the Boston area, all freshly prepared by our chefs, using locally sourced produce. Conferencing facilities, FREE WIFI and parking on site.

📍: Supreme Inns, Bicker Bar, Bicker, Boston, Lincolnshire PE20 3AN  
☎: 01205 822804 ✉: enquiries@supremeinns.co.uk  
🌐: www.supremeinns.co.uk 💰: From £57



## The Forge & Smithy Holiday Cottages

Self Catering  
★★★★



Fully & tastefully refurbished cottages. Ideally located. Award-winning and highly recommended with excellent visitor comments. Rural location with access to Lincolnshire's attractions. Private gardens with secure parking. The Forge sleeps five, the Smithy sleeps two. These highly sought after cottages offer you an excellent vacation.

📍: Chapel Road, Tumby Woodside, Nr Coningsby, Lincolnshire PE22 7SP ☎: 01526 342943  
☎: 07774 782805 ✉: enquiries@the4ge.co.uk  
🌐: www.the4ge.co.uk 💰: £200-£650 depending on unit, date and duration, minimum stay 3 nights.



## The Barn

Self Catering  
★★★★



This very attractive converted barn is situated in the owner's water fowl gardens, with the added attraction of rheas and wallabies. It is just one mile from village shops, inns, restaurants and takeaways. The Barn is located in Donington, with the historic market towns of Boston, Spalding and Sleaford nearby.

📍: 110 Quadring Road, Donington, Spalding, Lincolnshire PE11 4SJ ☎: 01775 821242  
✉: margaretsmith814@googlemail.com  
🌐: www.thebarnlincolnshire.co.uk  
💰: £300 per week or £50 per night



## Long Acres Touring Park

Caravan & Camping  
★★★★★ / ★★★★★



Award winning, 5 star, adults only touring caravan park. Peace and tranquil, with a warm and friendly atmosphere. The 40 hardstanding pitches are attractively laid out to take maximum advantage of the great variety of trees and shrubs, that offer a haven for birds and wildlife. Price includes one dog and free wifi. Holiday cottage also available.

📍: Station Road, Old Leake, Boston PE22 9RF  
☎: 01205 871555 ✉: info@long-acres.co.uk  
🌐: www.long-acres.co.uk  
💰: £20-£25



## VALES ACCOMMODATION



## LINCOLNSHIRE WOLDS



## Woodland Waters

Guest Accommodation



Brand new to Woodland Waters are our "Woodland Rooms". They are based on a small hotel comprising of ten double/ triple rooms available on a room only basis. Breakfast is available from our onsite restaurant and is served between 8.30am-10.30am daily. Rooms are available to book now, online or by phone (full payment is required on booking).

📍: Willoughby Road, Ancaster, Grantham NG32 3RT  
☎: 01400 230888  
✉: info@woodlandwaters.co.uk  
🌐: www.woodlandwaters.co.uk  
💰: From £70 per night







Hambleton Hall, Hambleton,  
Oakham, Rutland LE15 8TH  
T: 01572 756 991  
E: [hotel@hambletonhall.com](mailto:hotel@hambletonhall.com)  
W: [www.hambletonhall.com](http://www.hambletonhall.com)

## HAMBLETON HALL



Hambleton Hall is the ultimate in small country house hotels with elegant surroundings and spectacular lakeside views over the glorious gardens. The interior is stylish and comfortable with 17 individually decorated bedrooms and the Michelin starred restaurant is rated amongst England's very best, with an award winning wine list full of delicious bottles.

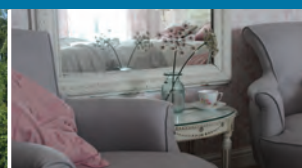


### RIVER WELLAND RUNNING THROUGH STAMFORD



### The Grange

B&B  
★★★★

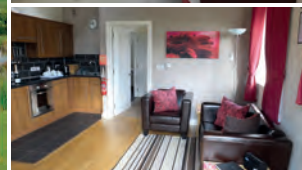
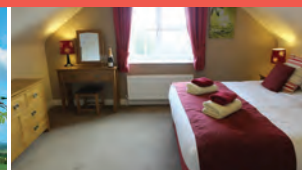


Welcome to Grange Farm where guests can relax and enjoy the delights of staying in peaceful countryside on the edge of the Wolds, between Lincoln and Louth. We offer both Bed and Breakfast in comfortable ensuite rooms with spa baths and great attention to detail, or Self Catering Cottages in a converted barn. This little gem is family owned and it shows – from the welcome tea and cake to the excellent local advice. Within easy reach of historic Lincoln, Wolds Market Towns and famous coastline. Enjoy local produce with a hearty award winning breakfast, Log fires, farm trail, trout fishing and tennis court, sunsets and open skies. Perfect accommodation for business trips or pleasure. Awarded visit England Gold Award.

📍 Torrington Lane, East Barkwith, Market Rasen LN8 5RY  
☎ 01673 858670  
✉ [sarahstamp@myfwi.co.uk](mailto:sarahstamp@myfwi.co.uk)  
🌐 [www.thegrange-lincolnshire.co.uk](http://www.thegrange-lincolnshire.co.uk)  
💰 Prices: Single from £65, Twin/Double £80-85  
📞 📧 📱 📺 📺 📺 📺

### Greetham Retreat Holiday Cottages

Self Catering  
★★★★



Greetham Retreat provides an idyllic rural escape all year round. Set in more than four acres of private parkland grounds offering stunning views across the Lincolnshire Wolds, it is centrally located in Lincolnshire, within lovely open countryside, near Horncastle. This makes it the perfect place to stay for exploring the county, visiting attractions or simply enjoying activities from city to coast. If you are looking for peaceful relaxation, we offer the perfect hideaway.

Our multi award-winning self-catering cottages offer a real home from home experience; with modern features such as oak floors, leather sofas, fully equipped kitchens, flat-screen TVs and Wi-Fi; they're ideal for couples and families alike. All have en-suite facilities, some have features such as a wet room or whirlpool bath. Pets are welcomed into most cottages.

📍 Greetham Lodge, Tetford Road, Greetham, Horncastle, Lincolnshire LN9 6PT  
☎ 01507 588640 📞 07747 602458  
✉ [holidays@greethamretreat.co.uk](mailto:holidays@greethamretreat.co.uk) 🌐 [www.greethamretreat.co.uk](http://www.greethamretreat.co.uk)  
💰 Prices: Three 1 bedroom cottages from £300 to £550 per week. Spacious 2 & 3 bedroom cottages from £450 to £880 per week. Short breaks all year (3 nights or more) from £210 to £616.  
📞 📧 📱 📺 📺 📺 📺





Hotel



Guest House, B&amp;B, Inn



Self Catering



Camping &amp; Caravanning

## THE ELM TREE

LUXURY BED & BREAKFAST

Luxury five star gold with breakfast award and ROSE Award. Offering you the chance to relax and unwind in luxurious surroundings. With homemade tea and cake on arrival and sumptuous interiors, you will forget all your worries and take the time for "you".



In the heart of the Lincolnshire Wolds

visit us at  
**WWW.ELMTREE.CO.UK**

or call  
**01790 753534 / 07875 585154**



## Kingthorpe Manor Farm

B&B  
★★★★



An idyllic retreat in a peaceful and tranquil setting amid the Bardney Limewoods in the heart of a national nature reserve. Historical, listed farmhouse with spacious ensuite rooms, sitting room with log fire and TV, conservatory and gardens. Award-winning breakfasts with organic, home-grown & local produce. Self-catering Shepherd's & Eco huts also available.

🏠: Kingthorpe Manor Farm, Kingthorpe, Nr Wragby LN8 5JF 📞: 01673 857290 📠: 07775 927916  
✉: patrickjamesbritton@googlemail.com  
🌐: www.kingthorpemanorfarm.com  
💰: Rooms from £55. Self-catering Huts £40 per night.  
🚗 🐕 🐶 🐾 🐾 🐾 🐾 🐾 🐾



## Grimblethorpe Hall Country Cottages

Self Catering



A warm welcome awaits you at our self-catering traditional farm holiday cottages, set in the grounds of Grimblethorpe Hall. Situated between the popular market town of Louth and historic cathedral city of Lincoln in the heart of the stunning Lincolnshire Wolds, an Area of Outstanding Natural Beauty. Ideally situated for walkers, cyclists and visiting beautiful sandy beaches. The Viking Way is just a field away from the cottages and there are walks over our grassland. The chalk stream that flows through our valley attracts lots of birds and wildlife, creating an oasis where guests can relax and unwind. We welcome dogs and offer guests tours of our rare breeds farm. Our meat is available to purchase on the farm.

🏠: Grimblethorpe, Louth, Lincolnshire LN11 0RB  
📞: 01507 313440 📠: 07774 637056  
✉: enquiries@grimblethorpehall.co.uk 🌐: www.grimblethorpehall.co.uk  
💰: 1 Bedroom Cottage from £260, 2 Bedroom Cottage from £408, 3 Bedroom Cottage from £640

🚗 🐕 🐶 🐾 🐾 🐾 🐾 🐾 🐾

## Woody's Top



A luxury holiday cottage with spectacular views in the heart of the Lincolnshire Wolds, an Area of Outstanding Natural Beauty. Woody's Top sleeps up to 10 people in five en-suite bedrooms. A stunning open plan kitchen, diner and living area welcomes you as you enter. The property has an enclosed garden and large patio suitable for al fresco dining and enjoying the most beautiful sunsets from the hot tub. Modern features including underfloor heating, wet rooms, a feature bath, American style fridge freezer, Bluetooth mirrors, wine cooler, wood burner, WIFI and games room. A wonderful location for exploring the unspoilt areas of countryside and beautiful sandy beaches. The city of Lincoln is around 35 minutes away, being famous for the historic cathedral and castle.

🏠: Woody's Top, Ruckland, Louth, Lincolnshire LN11 8RQ  
📞: 01507 533200  
✉: enquiries@woodystop.co.uk  
🌐: www.woodystop.co.uk  
💰: Please enquire on website/phone. Weeks and short breaks, all year round  
🚗 🐕 🐶 🐾 🐾 🐾 🐾 🐾 🐾

## Park Farm Holidays

Self Catering  
★★★



The two cottages are on the private road leading to Park Farm, next to three acres of woodland where the four log cabins are situated. The cottages have two single bedrooms, one double and a bathroom upstairs. The small cabins have one double bedroom, a twin and a bathroom. A sizeable lounge has a kitchenette. The large cabin sleeps six.

🏠: Park Farm, Withern, Alford, Lincolnshire LN13 0DF  
📞: 01507 450331 ✉: info@parkfarmholidayswithern.com  
🌐: www.parkfarmholidayswithern.com  
💰: Weekly prices from £300 to £595. Short breaks available, see website.  
🚗 🐕 🐶 🐾 🐾 🐾 🐾 🐾 🐾



## Railway Tavern Cottages

Self Catering



The Railway Tavern Cottages are situated close to the award-winning Railway Tavern pub. Both cottages are two bedroomed sleeping four persons. They offer home from home comfort and excellent facilities within a rural setting. Between Louth and Alford on the edge of the Lincolnshire Wolds, an ideal location to visit many attractions. Westerby Lodge is disabled friendly with a full wet room and all ground floor level. Holly Cottage is two storeys, both have lovely rural views and garden area with seating. They have open plan living areas with underfloor heating and modern decor. Available for short breaks, minimum of three nights, or weeks. Come and relax, we look forward to welcoming you. We have a 3 star Visit England Award plus gold award for both cottages.

📍 Railway Tavern, Main Road, Aby, Near Alford, Lincolnshire LN13 0DR

☎ 01507 480676

✉ dawnrailwaytavaby@gmail.com

🌐 www.railwaytavern-aby.co.uk

💰 Prices: From £295-£620 per week, short breaks minimum of 3 nights available

♿ 🚗 🚲 🏠 🍷 🍺 🍻 🍴 🍽 🍷 🍺 🍻 🍴 🍽

## Kingfisher Lodge

Self Catering

★★★★



A private wildlife haven in Tennyson country. This beautifully designed lakeside lodge has spectacular views over the Wolds and Alder Valley Lake. Private fishing, good walking, cycling, riding or simply complete relaxation. Open all year, online bookings taken, no smoking and no pets.

📍 Harrington Road, Hagworthingham, Spilsby, Lincolnshire PE23 4NE

☎ 01205 870210

✉ admin@ewbowser.com

🌐 www.meridianretreats.co.uk

♿ 🚗 🚲 🏠 🍷 🍺 🍻 🍴 🍽

## Ramsden Hall

Self Catering

★★★★



Set in the pretty hamlet of Hareby overlooking scenic Wolds countryside. Lovingly restored while retaining character and charm and offering a full complement of modern amenities. Tranquil setting, with nature reserves, horse riding, walks and quiet country lanes close by. No smoking, no pets, open all year, online bookings.

📍 Hareby, Spilsby, Lincolnshire PE23 4HT

☎ 01205 870210

✉ admin@ewbowser.com

🌐 www.meridianretreats.co.uk

♿ 🚗 🚲 🏠 🍷 🍺 🍻 🍴 🍽

## Westfield Farm Cottages

Self Catering



Converted 19th century farm buildings. Cottages for two, four or six people, sleeping up to eighteen in total. No fixed arrival day and short stays all year. Quiet countryside location, close to Louth, the Wolds and the East Coast. Free WiFi now available.

📍 Stewton, Louth, Lincolnshire LN11 8SD

☎ 01507 354892

✉ enquiries@westfieldfarmcottages.co.uk

🌐 www.westfieldfarmcottages.co.uk

💰 Prices: Please see website

♿ 🚗 🚲 🏠 🍷 🍺 🍻 🍴 🍽



## FARMER BROWNS ★ FARM MADE ICE CREAM & COFFEE SHOP ★



We are a working family run farm with an ice cream parlour and coffee shop. We have been making ice cream since 2008 using whole milk from our Holstein/Friesian dairy cows and wherever possible using naturally sourced flavourings. Enjoy our dairy ice cream, delicious homemade cakes, breakfasts, lunches and a selection of hot and cold drinks. Ample free parking and large grassed play area for children.

Woodrow Farm, Sutton Road, Huttoft, Alford, Lincs LN13 9RL, T: 07946 485549  
darren@farmerbrownsicecream.co.uk • www.farmerbrownsicecream.co.uk



## LOUTH RIVERHEAD THEATRE

Here at Louth Riverhead Theatre, we like to think we have something for everyone.

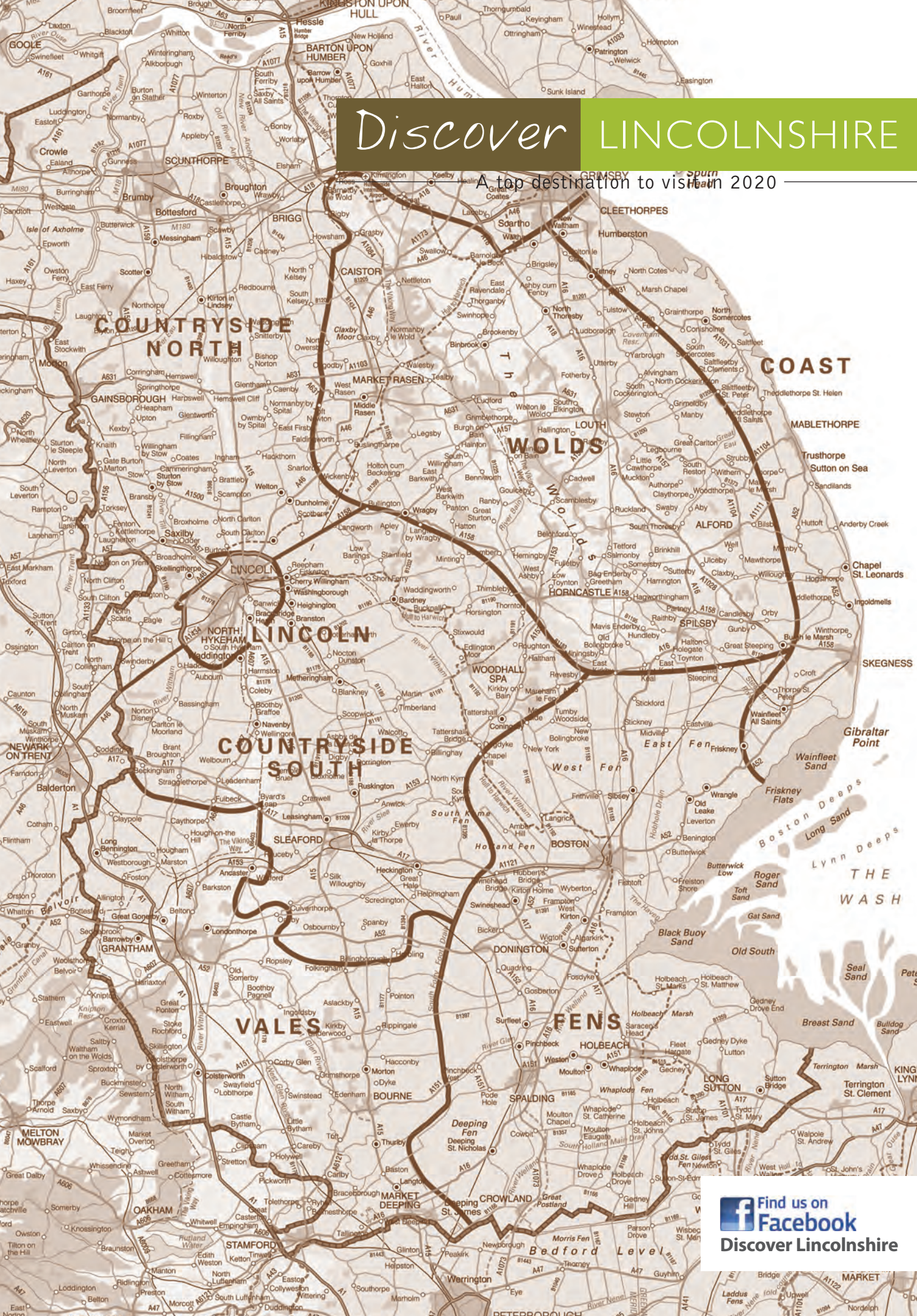
We host many shows featuring Live Theatre, Dance, Live Music and family shows, which run alongside our in-house Louth Playgoers programme of plays, concerts, Pantomime and the annual Musical. We are volunteer-run and if you would like to join us, please do get in contact, we need people in every department.

To see all that we do, or to book any shows, or find any more info please visit [www.louthriverheadtheatre.com](http://www.louthriverheadtheatre.com) or call 01507 600350, or pop into the Box Office open Monday-Saturday 10am-1pm and check out The Riverhead Gallery and have a coffee in our Café.



# Discover LINCOLNSHIRE

A top destination to visit in 2020



 Find us on  
**Facebook**  
Discover Lincolnshire



# Ancaster Leisure

[www.ancasterleisure.co.uk](http://www.ancasterleisure.co.uk)

**Karting • Paintball**  
**Quads • Laser Tag**  
**Airsoft • Bowling**  
**Lincolnshire's biggest activity venue**



THE IBCC PROVIDES A WORLD-CLASS FACILITY ACKNOWLEDGING THE EFFORTS, SACRIFICES AND COMMITMENT OF THE MEN AND WOMEN, FROM 62 DIFFERENT NATIONS, WHO CAME TOGETHER IN BOMBER COMMAND DURING WWII.

- Hear the stories of the people who were there
- Discover what it was like to be on a bombing operation with our immersive experience
- Be a member of an operational Aircrew with our interactive aircraft table
- Find out about the role of women in WWII
- Can you complete the slang challenge?
- Travel the world with the nations who served in Bomber Command
- What did children do during the war?
- Build a plane puzzle – how quickly can you complete the challenge?

ACCESS TO THE PEACE GARDENS AND MEMORIAL IS FREE OF CHARGE  
FOR EXHIBITION ADMISSION CHARGES AND EVENTS VISIT [WWW.INTERNATIONALBCC.CO.UK](http://WWW.INTERNATIONALBCC.CO.UK)



**OPEN 6 DAYS A WEEK – 9.30AM TO 5PM**  
CLOSED MONDAYS EXCEPT BANK HOLIDAYS | LAST EXHIBITION ENTRY 4PM

**01522 514755 | [INFO@INTERNATIONALBCC.CO.UK](mailto:INFO@INTERNATIONALBCC.CO.UK)**  
INTERNATIONAL BOMBER COMMAND CENTRE, CANWICK HILL, LINCOLN, LN4 2HQ

**RECOGNITION.  
REMEMBRANCE.  
RECONCILIATION.**





## Boston GUILDHALL



FREE ENTRY

Discover the stories of the Guildhall from the 1390s to the present day

- ❖ Exhibitions and events
- ❖ The Pilgrim Fathers connection
- ❖ Activities and trails
- ❖ Wedding ceremonies
- ❖ Group tours and room hire available

Normal opening 10.30am to 3.30pm Wednesday to Saturday (last admission 3pm). Please check before you visit that we will not be closed for a private function.

South Street, Boston PE21 6HT  
[www.bostonguildhall.co.uk](http://www.bostonguildhall.co.uk)  
 01205 365954  
[ticboston@boston.gov.uk](mailto:ticboston@boston.gov.uk)



## Fyde House

A Grade 1 Listed Queen Anne Town House

Nicholas Pevsner's Architectural Guide describes it as "undoubtedly the grandest house in town"

Portraits, prints and photographs within the rooms show some of the history associated with the Fyde family. Built in 1702 a visit to Fyde House is free. Learn the history of the house and the people who lived there, look around the rooms and discover more with the help of one of our friendly volunteers. Explore the beautiful award-winning walled garden.

The home of the Boston Preservation Trust who saved the house in 1935. It is also the home to the History of Boston Project and the Boston Hanse Group. Sir Joseph Banks, recorder of Boston, was a regular visitor.

The house is open Monday to Friday 10am to 4pm. Refreshments served 10am to 3pm every Wednesday.

For more information visit  
[www.bostonpreservationtrust.com](http://www.bostonpreservationtrust.com) or  
 email [info@fydehouse.org](mailto:info@fydehouse.org)

Fyde House, South Square, Boston, Lincolnshire PE21 6HT  
 01205 351520

DONATIONS WELCOME!

## Shodfriars HALL



### THE SHODFRIARS PROJECT

Working to bring this landmark building in Boston's Cultural Quarter back to life.

**TOURS...** Take a tour of the building. Learn about its history & plans for its future



Shodfriars COFFEE SHOP

**WHILE YOU'RE HERE...**

Visit our coffee shop for Stokes Coffee & a selection of cakes, lunch, afternoon tea & ice cream

**OPEN Mon- Sat: 9.30 - 4.30**

South Street, Boston Lincs 01205 359191

[shodfriars.co.uk](http://shodfriars.co.uk)

**BLACKFRIARS THEATRE & ARTS CENTRE**

**BOSTON, Lincs**

Blackfriars Arts Centre Ltd is a Registered Charity. Charity Number 22591.

**BOX OFFICE:**  
**01205 363108**

**BALLET**



**PANTO**



**DRAMA**



**LIVE MUSIC**

'Live theatre in the heart of Boston delivering something special for everyone.'

Visit our website at:-  
[www.blackfriarsartscentre.co.uk](http://www.blackfriarsartscentre.co.uk)

[www.visitbostonuk.com](http://www.visitbostonuk.com)





